



# Course Catalogue 2025/2026

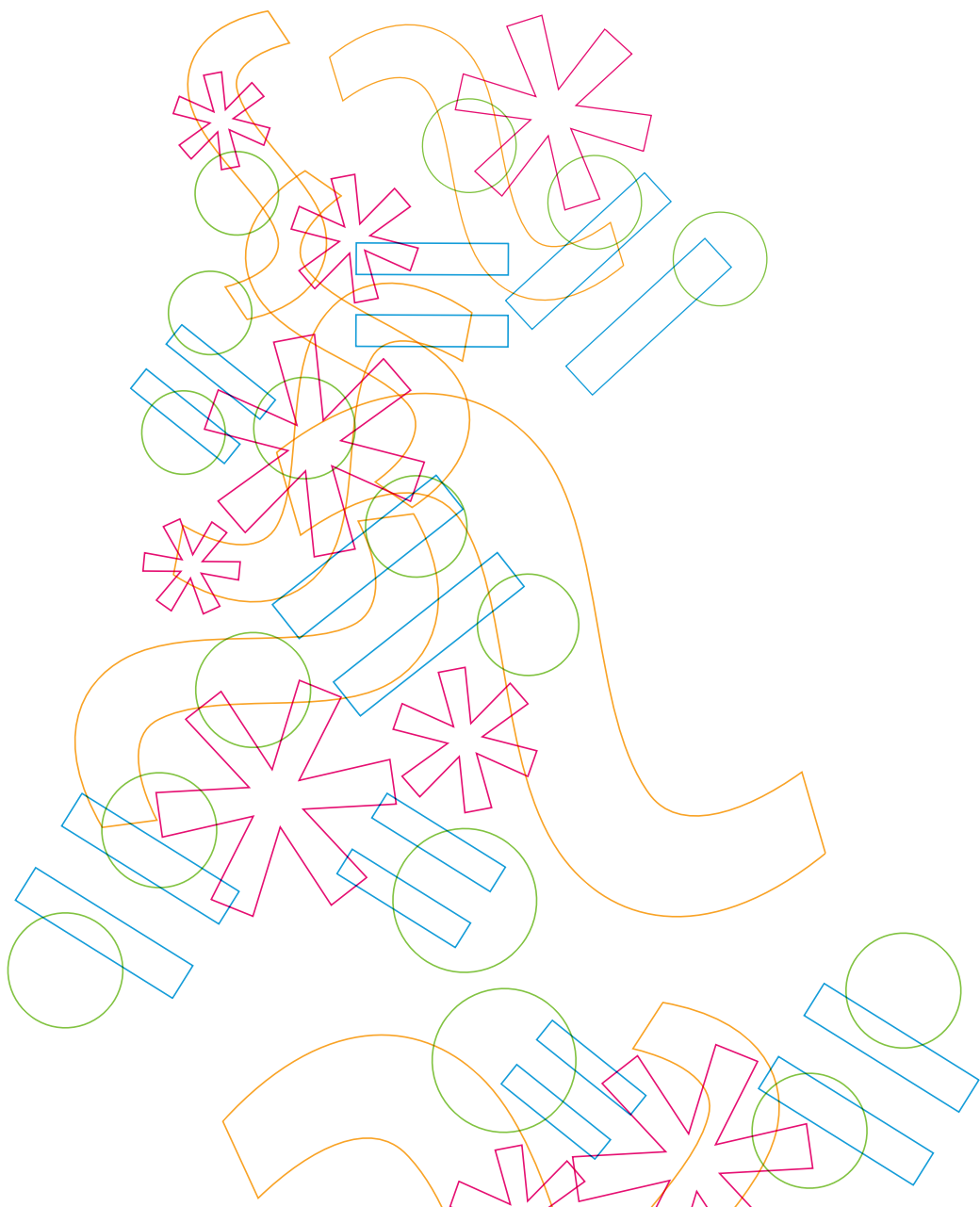
COURSES IN ENGLISH (AND OTHER LANGUAGES)  
FOR INTERNATIONAL STUDENTS



Co-funded by  
the European Union

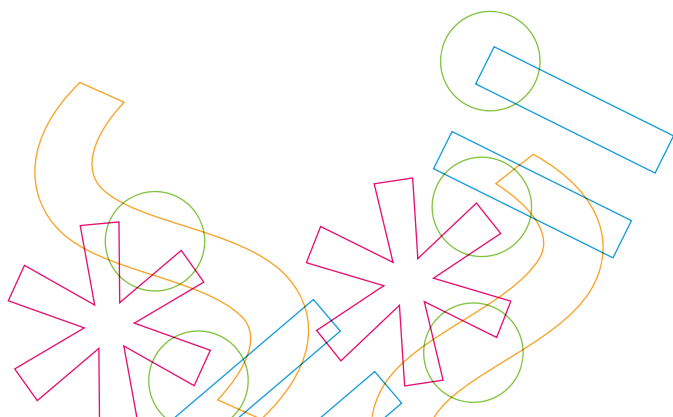


MINISTRY OF EDUCATION,  
YOUTH AND SPORTS



# Content

Register for courses . . . . .	5
Useful information . . . . .	5
Guidelines for selecting courses . . . . .	5
Contacts . . . . .	7
<b>Winter Semester 2025/2026 . . . . .</b>	<b>8</b>
Faculty of Education . . . . .	9
Faculty of Informatics and Management . . . . .	12
Philosophical Faculty . . . . .	14
Faculty of Science . . . . .	16
<b>Summer Semester 2025/2026 . . . . .</b>	<b>20</b>
Faculty of Education . . . . .	21
Faculty of Informatics and Management . . . . .	24
Philosophical Faculty . . . . .	26
Faculty of Science . . . . .	28
ESN Hradec Králové . . . . .	31







**Co-funded by  
the European Union**

The European Union Commission's support for the production of this publication does not constitute an endorsement of the content, which reflect the views only of the authors, and the Commission cannot be held responsible for any use which may be made of the information contained therein.

## Register for courses

Exchange students from all our partner universities are invited to register for courses with instruction in the English language. Whether the student participates within the Erasmus+ program, or any other exchange program, he/she may opt for a vast selection of courses. The dynamic and youthful University of Hradec Králové – an institution founded in 1959 that has been named as such since 2000 – has currently about 6300 students and provides high-quality tertiary education within a large scope of study fields that comprise social sciences, humanities, educational studies, natural sciences, economics and information technology.

## Useful information

The university campus is situated conveniently in the town center within walking distance of other university buildings, the Educational and Scientific Library, and the old town. Our university has a very well established ESN Hradec Králové. The mission of the volunteering students at the ESN HK is to help with the integration of Erasmus and other international students into the local environment. They will pick you up at the airport, invite you to a welcome week, and organize activities throughout the whole semester. Exchange students are provided with accommodation at the University Halls of Residence Palachova up to available capacity.

**VISA (non-EU citizens):** Foreign citizens who are subject to visa requirement are obliged to apply for a visa prior to their entry into the Czech Republic at an authorized Czech embassy. A visa is not required for EU citizens. It takes at least two months to get a visa, so don't forget to apply on time!

**Other fees:** Valid comprehensive health insurance. Fees for copying and scanning (like for Czech students).

## Guidelines for selecting courses

The academic year is divided into two semesters. The winter semester usually starts the third week of September and ends in December (22nd September to 21st December 2025); the summer semester begins in February and ends in May (9th February to 10th May 2026). Each semester is followed by a 6 week period of exams. Make sure you consult the course offer of the appropriate semester.

The university consists of four parts: **the Faculty of Education, the Faculty of Informatics and Management, the Philosophical Faculty and the Faculty of Science**. Make sure you check the course offer of the appropriate faculty that you will be applying for.

Incoming students choose courses from their receiving faculty. However, it is also possible to register for courses from other faculties. In that case, courses that correspond to at least 75% of credits selected by the student have to be registered at the receiving faculty.



**Please note that the course offer provided in this catalogue is subject to change and the University of Hradec Králové reserves the right to modify it. Do not hesitate to contact the international offices of the respective faculties for any information (see the contact list).**

Scan the QR code for course syllabi and detailed information about each course. Most faculties offer courses for all degrees of study. The Faculty of Science has courses divided. You may also contact the international office of the faculty you apply to for further information.



PORTAL UHK – IS/STAG



# Contacts

---

**Name of the institution:** University of Hradec Králové

---

**Address:** Rokitanského 62  
500 03 Hradec Králové  
Czech Republic

---

**Erasmus ID code:** CZ HRADEC01

---

---

**Faculty of Education:** Petra Nosková  
[petra.noskova@uhk.cz](mailto:petra.noskova@uhk.cz)

---

**Faculty of Informatics and Management:** Eva Pospíchalová  
[eva.pospichalova.2@uhk.cz](mailto:eva.pospichalova.2@uhk.cz)

---

**Philosophical Faculty:** Tomáš Herčík  
[ff.internationaloffice@uhk.cz](mailto:ff.internationaloffice@uhk.cz)

---

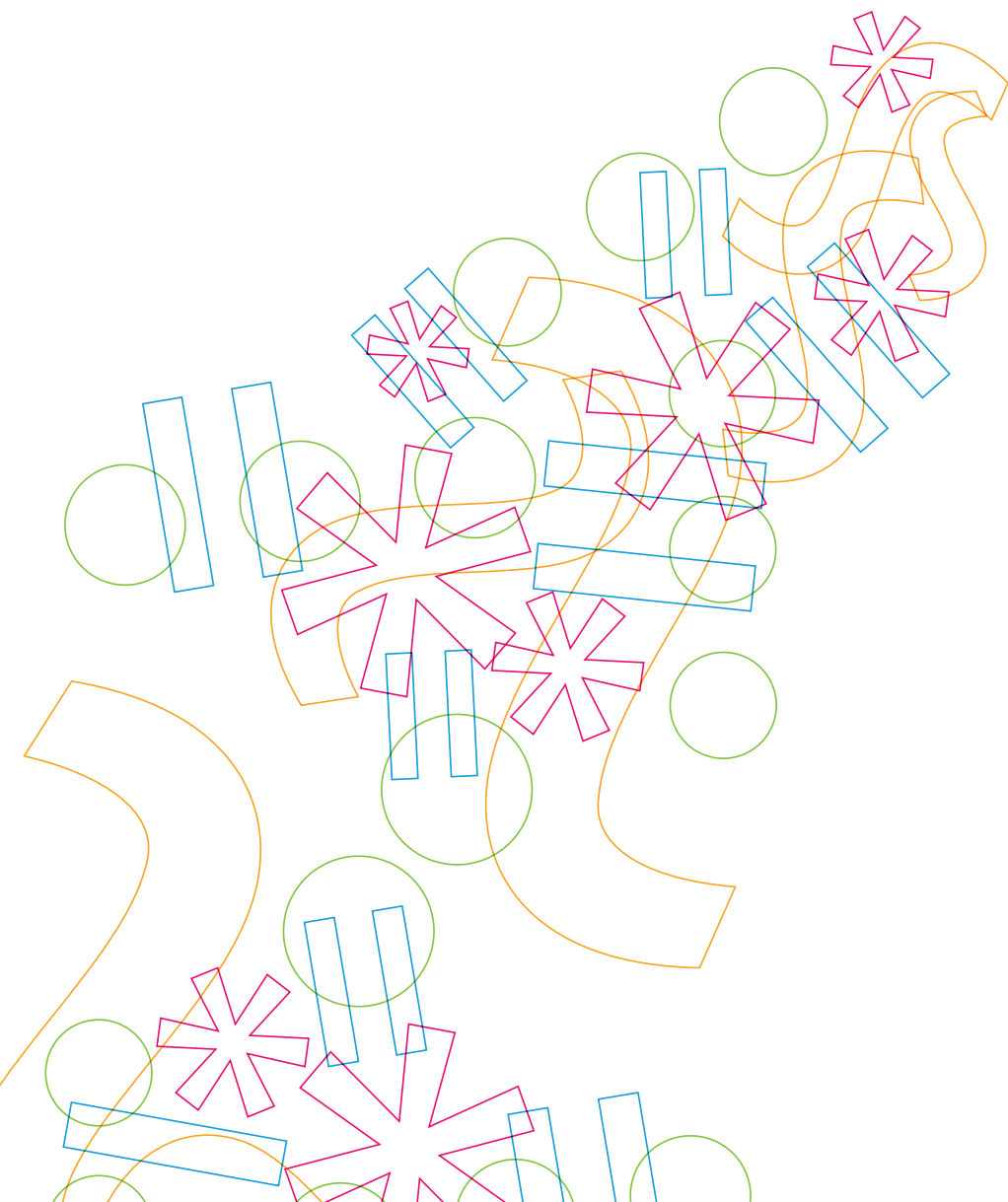
**Faculty of Science:** Pavla Holubová  
[pavla.holubova@uhk.cz](mailto:pavla.holubova@uhk.cz)

---



# Winter Semester 2025/2026

22nd September to 21st December 2025







Course title	Number of ECTS credits	Code
<b>CULTURE STUDIES I.</b>		
Anthropology of Ritual . . . . .	4	KKNS/PANRY
Culture and Nature – Anthropology of Mutual Entanglement . . . . .	4	KKNS/PCUNA
Ethical Bases of Transcultural Communication 3 (Bioethics) . . . . .	4	KKNS/AEV3
Ethnic and National Minorities in CZ and EU . . . . .	3	KKNS/AETNA
General History . . . . .	3	KKNS/AOBDE
Phenomenon of National and Ethnic Injustice in Modern History . . . . .	4	KKNS/ZPHEI
Anthropology of Homes: European Settlements and Landscapes Through time. . . . .	4	KKNS/ATEK5
<b>CZECH LANGUAGE FOR FOREIGNERS I.</b>		
Czech for Foreigners. . . . .	4	KČJL/ZCFOR
<b>EDUCATION AND TEACHING ORIENTATION I.</b>		
Philosophy of Education . . . . .	2	KPP/AFIVY
Comparative Education (for Early Childhood/Preprimary school teachers) . . . . .	2	ÚPPSP/PNCED
Comparative Education (for Primary school teachers) . . . . .	4	ÚPPSP/PZCED
<b>ENGLISH LANGUAGE AND CULTURE I.</b>		
Chapters from Culture and Literature of English Speaking Countries <sup>1</sup> (England) . . . . .	2	KAJL/BADK1
Anglophone Literatures 1. . . . .	3	KAJL/NSAL1
English Speaking Countries 1 (United Kingdom) . . . . .	3	KAJL/BARE1
English Speaking Countries 3 (USA) . . . . .	3	KAJL/BARE3
English for Primary School Teachers 1. . . . .	1	KAJL/PZA11
English Speaking Countries 1 (United Kingdom + Ireland) . . . . .	1	KAJL/BREL1
Language Practice 3 (C1) * . . . . .	2	KAJL/BACV3
English Speaking Countries 3 (USA + Canada) . . . . .	1	KAJL/BREL3
English Speaking Countries 5 (Australia + New Zealand) . . . . .	3	KAJL/BARE5
Practical English (C1) * . . . . .	2	KAJL/NZPAJ
Writing Skills in English. . . . .	2	KAJL/BAPIP
Practical English III (B2) . . . . .	2	KAJL/PAAP3
Practical Seminar in English Phonetics . . . . .	2	KAJL/BAFCV
<i>* only one course of the practical courses in this module can be enrolled</i>		
<b>FRENCH LANGUAGE AND CULTURE I. (in French language only)</b>		
Expression écrite 1/Writing Skills in French Language 1. . . . .	1	KFJL/BPIS1
French Speaking Countries and Conversation in French 1. . . . .	1	KFJL/BKON1
Géographie et culture de la France 1/French Geography and Culture 1. . . . .	2	KFJL/BGEO1
Multimedia Seminar in French 1. . . . .	2	KFJL/BMUS1

## GERMAN LANGUAGE AND CULTURE I. (in German language only)

Deutsche Literatur 2/German Literature 2 . . . . .	1	KNJL/NSNL2
Deutsche Sprache der Gegenwart 1 /Contemporary German Language and Culture 1 . . . . .	4	KNJL/BNSJ1
Deutsche Sprache der Gegenwart 3 /Contemporary German Language and Culture 3 . . . . .	3	KNJL/BNSJ3
Deutsche Sprache und Landeskunde 5 /Contemporary German Language and Culture 5 . . . . .	2	KNJL/BNSJ5
Historische Entwicklung der deutschen Sprache /History of German Language . . . . .	2	KNJL/NSHIS
Konversation in der deutschen Sprache 1 /Conversation in German Language 1 . . . . .	3	KNJL/PNKV1
Landeskunde der deutschsprachigen Länder 1 /Life and Institutions of German Speaking Countries 1 (Germany) . . . . .	3	KNJL/BNRE1
Landeskunde Österreich /Life and Institutions of German Speaking Countries 3 (Austria) . . . . .	3	KNJL/BNRE3
Morphologie der deutschen Sprache der Gegenwart /Morphology of Contemporary German Language . . . . .	4	KNJL/NSNMO
Phonetik der deutschen Sprache 1/German Phonetics. . . . .	3	KNJL/BNFN1

## MUSIC ART I.

Choir 1 . . . . .	1	HUDK/BKSB1
History of European Music . . . . .	5	HUDK/ZHOEM
Piano Improvisation 1 . . . . .	1	HUDK/PVKI1
Intonation 1 . . . . .	2	HUDK/PKIN1
Orchestra Playing 1 . . . . .	1	HUDK/BXOR1
Playing a Musical Instrument/Solo Singing. . . . .	6	HUDK/ZPMIS
(only for students majoring in music)		
Playing a Musical Instrument 1 (Piano . . . . .	1	HUDK/BKNA1
(only for students minoring in music)		
Voice Education 1. . . . .	1	HUDK/BKPV1

## PHYSICAL EDUCATION AND SPORTS I.

English Terminology in Physical Education. . . . .	2	KTVS/BATER
PE games (for lower secondary school) . . . . .	1	KTVS/BPOHR
Sport Games 1 (Handball and Floorball). . . . .	2	KTVS/BSPH1
Sport Games A (Volleyball). . . . .	1	KTVS/BSPHA
Sport Games B (Basketball) . . . . .	1	KTVS/BSPHB

## PSYCHOLOGY AND RESEARCH METHODOLOGY I.

Basics of Qualitative Research 2 . . . . .	4	KKNS/PBQR2
--	---	------------

## RUSSIAN LANGUAGE AND CULTURE I. (in Russian language only)

Язык как средство социального взаимодействия

/Language as a Means of Social Interaction . . . . .	2	KRJL/NJASI
Русская литература 20 века 1/Modern Russian Literature 1 . . . . .	2	KRJL/BMDR1
Русская культура и литература в контексте цифровых технологий /Russian Culture and Literature in the Context of Digital Media . . . . .	2	KRJL/BRDIG
Русский фильм 1/Russian film 1 . . . . .	2	KRJL/NFIL1
Русский фильм 1/Russian film 1 . . . . .	2	KRJL/BFIL1
Семинар по русскому языку 1/Russian Language Seminar 1 . . . . .	2	KRJL/NSEM1
Синтаксис русского языка/Russian Syntax . . . . .	3	KRJL/NSYRU
Синтаксис русского языка 2/Russian Syntax 2 . . . . .	2	KRJL/BSYR2

## SOCIAL EDUCATION, SOCIAL ORIENTATION I.

Introduction into Sociology . . . . .	2	KKNS/AUDOS
Sociology of Family . . . . .	4	ÚSS/ZSOFA

## SPECIAL EDUCATION NEEDS I.

Education of Children with Special Needs in Practice . . . . .	4	ÚPPSP/ZEDCS
Introduction to Counselling and Therapy: Theory and Approaches . . . . .	4	ÚSS/ZICAT
Speech and Language Intervention in Mainstream Classroom. . . . .	3	ÚPPSP/ZSLIC
The Specific Learning Difficulties . . . . .	4	ÚPPSP/ZSLDI

## TEACHING AND SOCIAL COMPETENCE PRACTICE I.

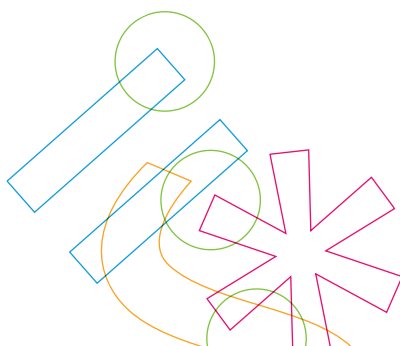
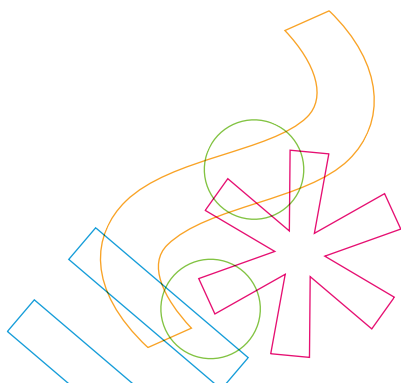
Observation Practice in Social Organizations . . . . .	4	ÚSS/ZEXKU
Practice in Kindergarten/Primary School . . . . .	4	ÚPPSP/ZPKPS
Teaching Practice in Lower and Upper Secondary Schools . . . . .	4	SOPDF/ZTPLU

## TECHNICAL SUBJECTS FOR TEACHERS I.

The Use of 3D Printing in the Construction of Prototypes and the Development of Student Creativity . . . . .	3	KTP/ZUPIC
Trends in Modern Technology . . . . .	1	KTP/NZTMT

## VISUAL ART I.

Bobbin Lace Production 1. . . . .	2	KVKTT/BPAL1
Drawing 1. . . . .	3	KVKTT/AGKR1

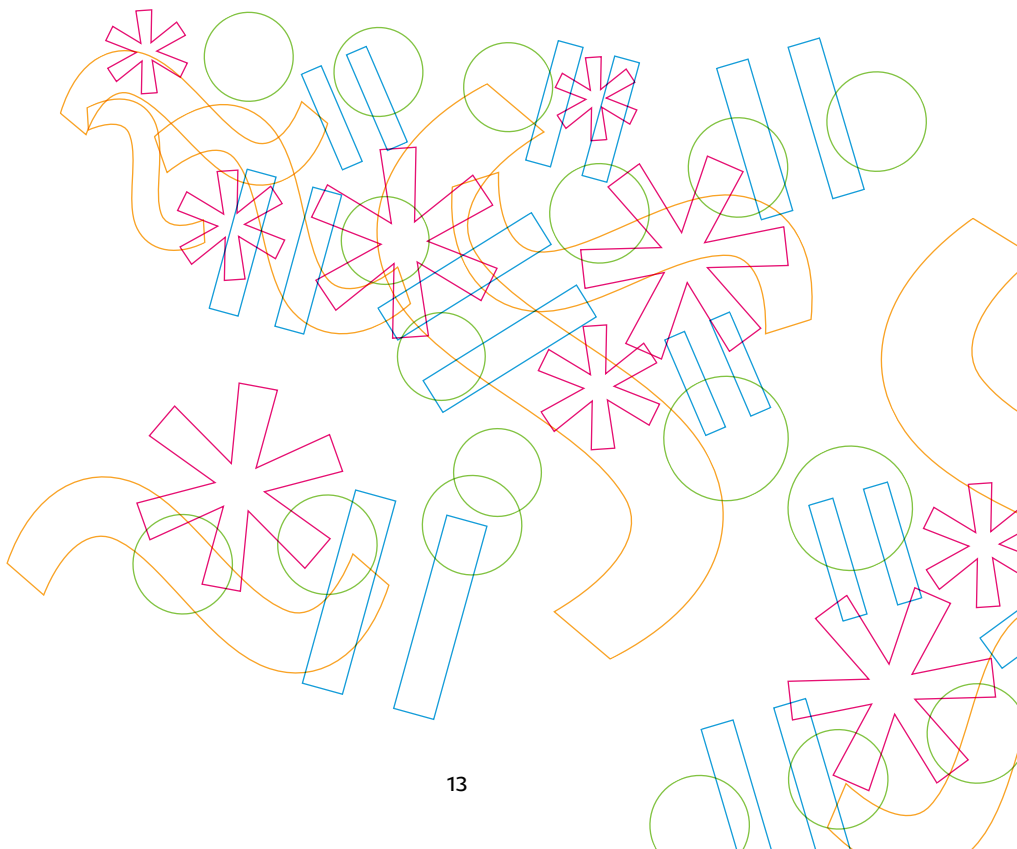






Course title	Number of ECTS credits	Code
Academic Writing . . . . .	2	KAL/AAWT
Advanced Technology and Technics in Programming . . . . .	6	KIKM/APPRO
Algorithms and Data Structures . . . . .	5	KIKM/AALGD
Autonomous Systems . . . . .	5	KIT/AAUTS
Basics of Banking. . . . .	4	KE/ABNK
Basics of Finance . . . . .	3	KE/AZAFI
Basics of International Accounting. . . . .	4	KE/AZMU
Business Economic. . . . .	5	KE/ANOP
Business Economics II . . . . .	4	KE/ANOP2
Business English I . . . . .	2	KAL/AOBA1
Complex Systems . . . . .	5	KIT/AKOS
Computer Graphics III . . . . .	6	KIKM/APGR3
Computer Networks I . . . . .	5	KIT/APS11
Corporate Communication . . . . .	3	KAL/CORPC
Crisis Management . . . . .	4	KM/AKRMN
Czech Language for Foreigners . . . . .	3	KAL/CZL
Database Systems I . . . . .	6	KIKM/ADBS
Discrete Methods and Optimization. . . . .	5	KIKM/ADMO
English in Practice I . . . . .	2	KAL/KOA1
English in Practice III. . . . .	2	KAL/KOA3
Enterprise Informatics II . . . . .	6	KIT/APRI2
German Language for Foreigners. . . . .	2	KAL/GL
International Trade . . . . .	4	KE/AMEZO
Introduction to Object Modelling. . . . .	5	KIT/AUOMO
Introduction to Programming . . . . .	3	KIKM/AUPRO
Law II . . . . .	4	KM/APRV2
Logistics . . . . .	4	KM/ALOGI
Management I. . . . .	3	KM/AZMN1
Managerial Accounting . . . . .	4	KE/AMNGU
Managerial Methods. . . . .	5	KM/AMAME
Marketing . . . . .	4	KM/AMRKT
Marketing Research . . . . .	4	KM/AMAVY
Mathematics I. . . . .	7	KIKM/AZMA1
Mathematics for Informatics I. . . . .	7	KIKM/AZMI1
Methods of Operational Research I . . . . .	5	KIKM/AMOV1
Microeconomics I. . . . .	6	KE/AMIE1
Microeconomics II . . . . .	5	KE/AMIE2
Numerical and Computational Mathematics. . . . .	6	KIKM/ANUMA
Object Modelling I . . . . .	5	KIT/AOMO1
Particular Project. . . . .	6	SOFIM/VP
Principles of Computers. . . . .	5	KIT/APRIP
Probability and Statistics. . . . .	6	KIKM/APSTE

Professional English I . . . . .	2	KAL/OA1
Professional English III . . . . .	2	KAL/OA3
Programming II . . . . .	6	KIKM/APRO2
Project Management . . . . .	5	KIT/ARPRO
Psychology I . . . . .	4	KM/APSY1
Psychology III . . . . .	4	KM/APSY3
Public Sector Economy . . . . .	4	KE/AEVES
Sports. . . . .	2	KRCR/POHA
Statistical Models and Data . . . . .	6	KIKM/ASTMO
Systems for Management Support I . . . . .	5	KIT/ASPM1
Technologies for WEB Publishing I . . . . .	5	KIT/ATPW1
Technology and Knowledge Transfer . . . . .	3	KIT/ATZT
Theory of Systems II . . . . .	5	KIT/ATES2

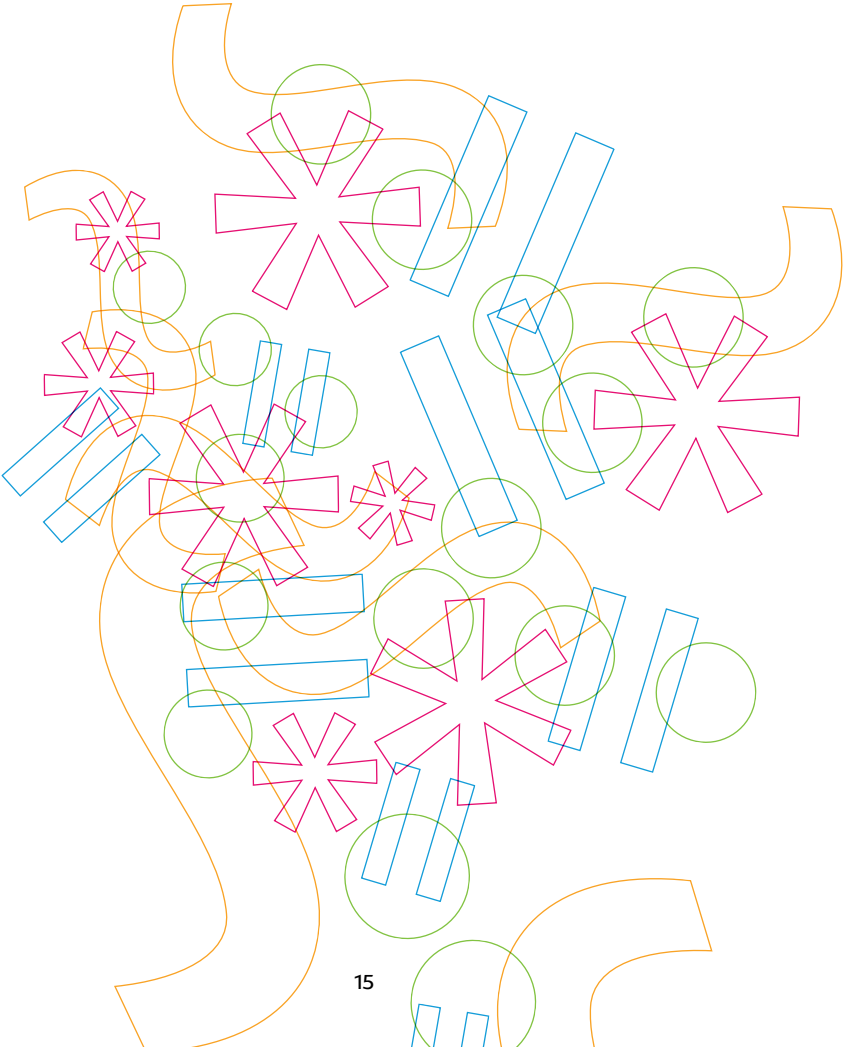




Course title	Number of ECTS credits	Code
20th Century World History . . . . .	5	KP/WH2PA
A History of the Book . . . . .	3	KPVHA/MPHOB
Block of Experts Lectures . . . . .	6	KP/EL2PB
Central European History 1781–1918 . . . . .	7	HIU/ECEH1
Central European Politics. . . . .	6	HIU/ECEPO
Central European Social Systems in Comparative Perspective. . . . .	5	HIU/ESYST
Combatting Corruption . . . . .	5	KP/CC2PB
Comparative Politics. . . . .	8	KP/CP2PA
Concepts of Central Europe . . . . .	5	HIU/ECOCE
Conversation in English. . . . .	3	CJP/COENG
Cross-Cultural Competence . . . . .	5	KP/CC4PB
Czech for International Students I . . . . .	6	CJP/CJ1
Czech for International Students II. . . . .	6	CJP/CJ2
English for humanities and social sciences. . . . .	4	CJP/EHSS
Ethical Theories in Social Work . . . . .	5	USP/PAETI
European Intergation: Polity, Politics and Policy . . . . .	6	KP/EP2KA
Film Seminar . . . . .	5	KP/FS4PB
French for International Students 1 . . . . .	4	CJP/IFJ1
History of the Soviet & Post-Soviet Russia . . . . .	2	HIU/PSSMX
Informal Communication Practices in Contemporary International Relations . . . . .	5	KP/RC2PB
Innovations in the Palaeolithic and Mesolithic . . . . .	5	ARCH/MINOV
Institutions and Politics of the EU . . . . .	5	KP/EUIP
International Conference Event in Social Work . . . . .	1	USP/PACON
International Relations . . . . .	8	KP/IR2PA
Introduction Seminar to Political Science. . . . .	10	KP/IS2PA
Introduction to Anthropology . . . . .	6	KP/IA4PA
Introduction to Archaeometallurgy . . . . .	4	ARCH/MJKIA
Introduction to Political Science . . . . .	7	KP/IP2PA
Management in Social Work . . . . .	5	USP/PAMAN
Models of Democracy . . . . .	8	KP/MD2PA
Modern Political Thought. . . . .	8	KP/MT2PA
Nonprofit Sector Law . . . . .	3	USP/PANEZ
Philosophy of Language . . . . .	7	KFSV/PPLAN
Philosophy of Social Science. . . . .	8	KFSV/FMPSS
Political Geography of Central Europe. . . . .	5	HIU/EPOGC
Political Systems of Sub-Saharan Africa 2 . . . . .	7	KP/PF3PA
Pottery Technology for the Archaeologist . . . . .	5	ARCH/MPOTA
Social Economy. . . . .	5	USP/PASEK
Reflections on Totalitarianism . . . . .	6	KFSV/REFTO



The Role of Women in Resistance to Totalitarian  
and Post–Totalitarian Regimes in East and Central Europe . . . . . 4 KSOC/ERWR  
Theory of Public Policy . . . . . 3 USP/PATEV  
Theory of Welfare State . . . . . 5 USP/PATWS  
United States from Revolution to the Civil War . . . . . 6 HIU/AAUSA



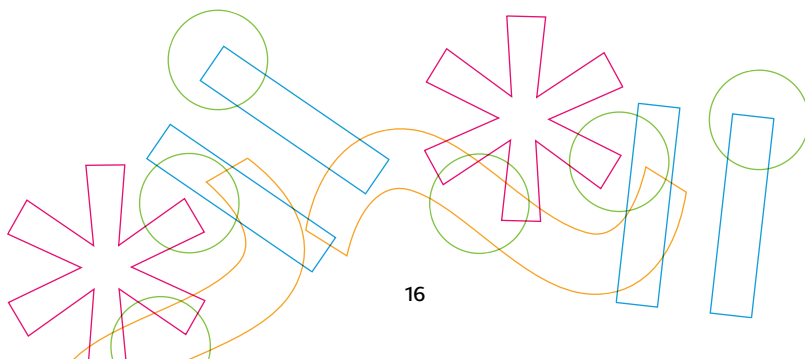
## BIOLOGY

Anatomy and Morphology of Animal . . . . .	3	B	KBI/BAMZI
Basic of Ethology. . . . .	3	B	KBI/BZAET
Basic of Toxicology and Ecotoxicology . . . . .	4	B	KBI/BZTOE
Basics of Cell Biology . . . . .	5	B	KBI/BZABB
Evolutionary Biology . . . . .	3	B	KBI/BEVBI
Basics of Geology. . . . .	4	B	KBI/BZAGE
General Ecology . . . . .	4	B	KBI/BOBEK
Human Anatomy . . . . .	4	B	KBI/BANCL
Microbiology . . . . .	4	B	KBI/BMIBI
Molecular Biology . . . . .	3	B	KBI/BMOBI
Phylogeny and System of Non-vasculars . . . . .	5	B	KBI/BFSSO
Phylogeny and System of Higher Plants . . . . .	5	B	KBI/BFSVR
Phylogeny and System of Chordates . . . . .	5	B	KBI/BFSST
Plant Physiology . . . . .	5	B	KBI/BFYRO
Principles of Terraristics . . . . .	3	B	KBI/BZTER
Biomonitoring. . . . .	4	M	KBI/NBIOM
Bryology and Lichenology . . . . .	3	M	KBI/NBRLI
Developmental Biology . . . . .	3	M	KBI/NDEBI
Entomology . . . . .	3	M	KBI/NENTO
Genomics and Proteomics . . . . .	5	M	KBI/NGEPR
Mammaliology <sup>1)</sup> . . . . .	3	M	KBI/NMAMA
Ornithology <sup>2)</sup> . . . . .	3	M	KBI/NORNI
Parasitology. . . . .	3	M	KBI/NPARA
Special Botanical Field Practice *. . . . .	3	M	KBI/NSBTC
Aquatic and Wetland Plants *. . . . .	4	M	KBI/NVMRO
Nature protection and Landscape Conservation II . . . . .	5	M	KBI/NOPK2
Plant Ecophysiology . . . . .	6	M	KBI/NEKFR

<sup>1)</sup> taught only in odd-numbered academic year

<sup>2)</sup> taught only in even-numbered academic year

\* these field practices require a certain level of physical fitness, as well as appropriate outdoor equipment



## CHEMISTRY

Analytical Chemistry 1 . . . . .	4	B	KCH/3ANA1
Bachelor Thesis 1 in Chemistry . . . . .	5	B	KCH/3BAP1
Chemical Software and Databases. . . . .	3	B	KCH/3CSDA
General and Inorganic Chemistry 1. . . . .	4	B	KCH/3OAN1
Fundamentals in Medicinal Chemistry . . . . .	6	B	KCH/3FACH
Fundamentals in Molecular Modelling . . . . .	4	B	KCH/3MOMO
Fundamentals in Toxicology and Pharmacology . . . . .	5	B	KCH/3TOFA
History of Chemistry. . . . .	2	B	KCH/3HICH
Laboratory Practice in Analytical Chemistry 1 . . . . .	2	B	KCH/3LAN1
Laboratory Practice in Instrumental Methods . . . . .	3	B	KCH/3LINS
Laboratory Practice in Organic Chemistry 2 . . . . .	2	B	KCH/3LOR2
Laboratory Practice in Physical Chemistry . . . . .	2	B	KCH/3LFCH
Laboratory Technique. . . . .	3	B	KCH/3LABT
Methods for Structural Study of Organic Compounds . . . . .	3	B	KCH/3MSOS
Organic Chemistry 2. . . . .	7	B	KCH/3ORG2
Physical Chemistry. . . . .	6	B	KCH/3FYCH
Practice in Fundamentals of Molecular Modelling . . . . .	3	B	KCH/3CMOM
Toxicology and Analysis of Food . . . . .	2	B	KCH/3TOAP
Toxicology of Plant and Animal Toxins . . . . .	5	B	KCH/3TRZJ
Advanced Inorganic and Bioinorganic Chemistry . . . . .	4	M	KCH/2PANC
Advanced Medicinal Chemistry . . . . .	5	M	KCH/2PFAC
Advanced Molecular Modelling . . . . .	4	M	KCH/2PMOM
Advanced Organic Chemistry . . . . .	5	M	KCH/2PORG
Applied Toxicology and Ecotoxicology. . . . .	5	M	KCH/2APTE
Biochemical and Molecular Biology Methods . . . . .	6	M	KCH/2BMBM
Bioinformatics and Cheminformatics . . . . .	6	M	KCH/2BCHI
Chromatographic Methods. . . . .	6	M	KCH/2CHRM
Diploma Thesis 1 in Chemistry. . . . .	10	M	KCH/2DIP1
Diploma Thesis 3 in Chemistry. . . . .	10	M	KCH/2DIP3
Heterocyclic Chemistry . . . . .	2	M	KCH/2CHHE
Laboratory Practice in Advanced Biochemical Methods . . . . .	2	M	KCH/2LBCH
Laboratory Practice in Advanced Molecular Modelling . . . . .	2	M	KCH/2CMOM
Laboratory Practice in Advanced Organic Chemistry. . . . .	2	M	KCH/2LORG
Laboratory Practice in Biochemical and Molecular Biology Methods. . . . .	2	M	KCH/2LBCH
Laboratory Practice in NMR . . . . .	2	M	KCH/2LNMR
Laboratory Practice in Sampling and Sample Preparation . . . . .	2	M	KCH/2LOPV
Molecular and Atomic Spectrometry . . . . .	6	M	KCH/2MASP
Pathophysiology and Pathobiochemistry. . . . .	3	M	KCH/2PAFB
Toxicology of Nanoparticles . . . . .	3	M	KCH/2TONA



## MATHEMATICS

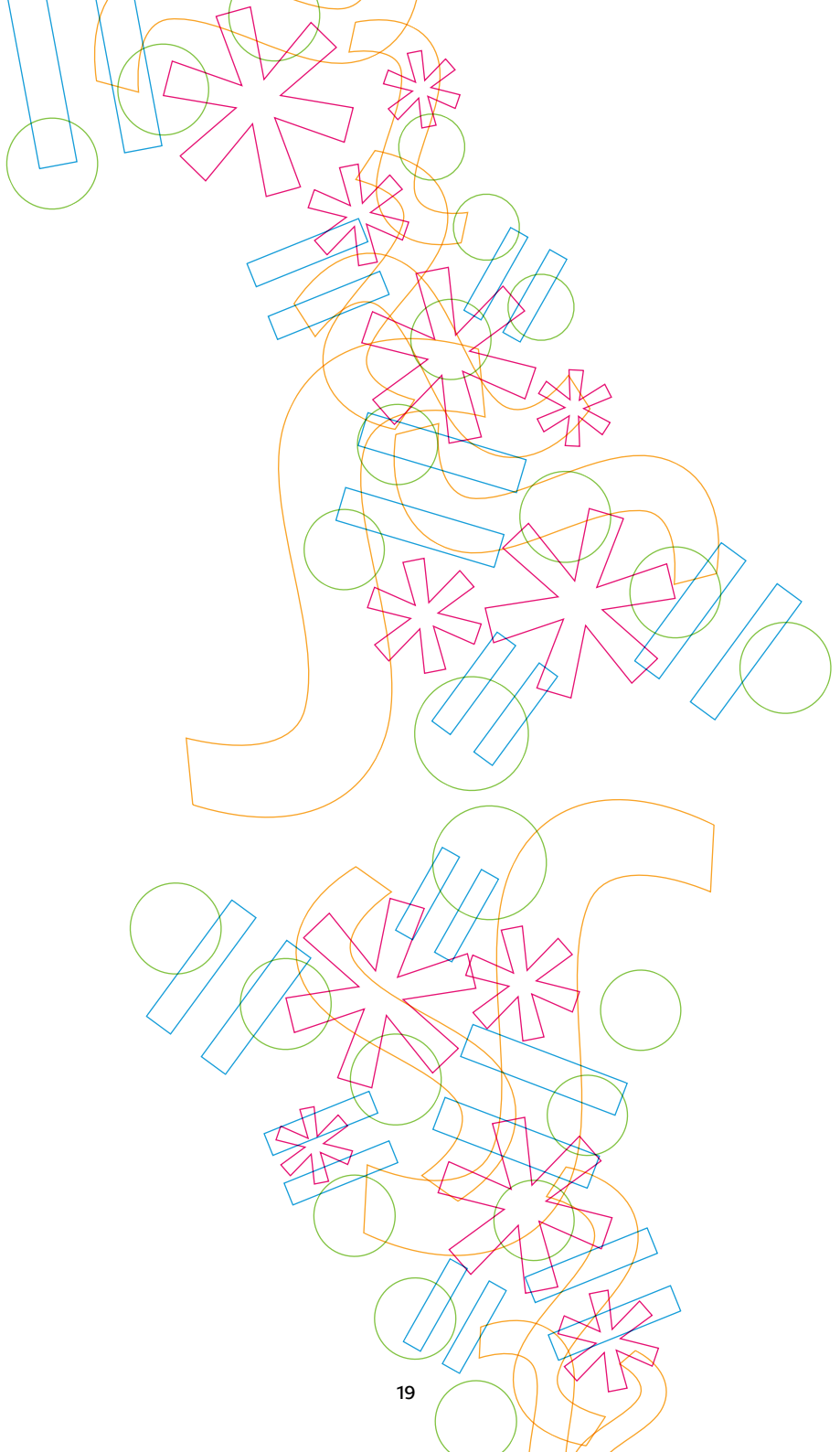
Algebra 1 . . . . .	6	B	KMA/BALG1
Geometry 1 . . . . .	4	B	KMA/BGEO1
Geometry 3 . . . . .	3	B	KMA/BGEO3
Introduction to Mathematics . . . . .	2	B	KMA/BUSTM
Introduction to Topology . . . . .	2	B	KMA/BZTOP
Mathematical Analysis 1 . . . . .	5	B	KMA/BANL1
Mathematical Analysis 3 . . . . .	3	B	KMA/BANL3
Mathematical Software. . . . .	1	B	KMA/BMASW
Difference Equations . . . . .	2	B	KMA/BDIFR
Applied Statistics . . . . .	3	M	KMA/NASTA
Didactics of Mathematics 1. . . . .	2	M	KMA/NDMA1
Financial Mathematics . . . . .	2	M	KMA/NFINM
Graph Theory . . . . .	3	M	KMA/NTEOG
History of Mathematics. . . . .	2	M	KMA/NDEJM
Introduction to Algebraic Topology . . . . .	2	M	KMA/NUATO
Introduction to Theory of Differential Equations . . . . .	5	M	KMA/NUTDR
Matrix Computations . . . . .	2	M	KMA/NMATA
Differential Geometry of Curves and Surfaces. . . . .	2	M	KMA/NDIGE
Methods of Solving Mathematical Tasks 1 . . . . .	2	M	KMA/NMER1
Symplectic Geometry . . . . .	2	M	KMA/NSYGE

## PHYSICS

Automation and Measurement . . . . .	3	B	KFY/3FAM
Biomedical Imaging Systems 1 . . . . .	2	B	KFY/3FBZS
Experiments in Modern Physics. . . . .	3	B	KFY/3FEMF
Measurement of Physical Quantities . . . . .	3	B	KFY/3FMFZ
Environmental and Health Monitoring Systems. . . . .	3	B	KFY/3FMSO
Physical Laboratory Practice 2 . . . . .	4	B	KFY/3FPR2
Theoretical Mechanics 1 . . . . .	4	B	KFY/3FTM1
Fundamentals of Electronics . . . . .	5	B	KFY/3FZEL
Physics – Particles and Fields . . . . .	4	B	KFY/3FZFC
Physics – Mechanics. . . . .	5	B	KFY/3FZFM
Physics – Electricity 2 . . . . .	5	B	KFY/3FZF2
Basics of Measuring Instruments. . . . .	2	B	KFY/3FZMP
Astrophysics and Geophysics . . . . .	3	M	KFY/NASTR
Condensed Matter Physics. . . . .	5	M	KFY/NFPK
Fundamental Experiments and Historical Measurements . . . . .	3	M	KFY/NFEHM
Theory of Relativity . . . . .	3	M	KFY/NTR

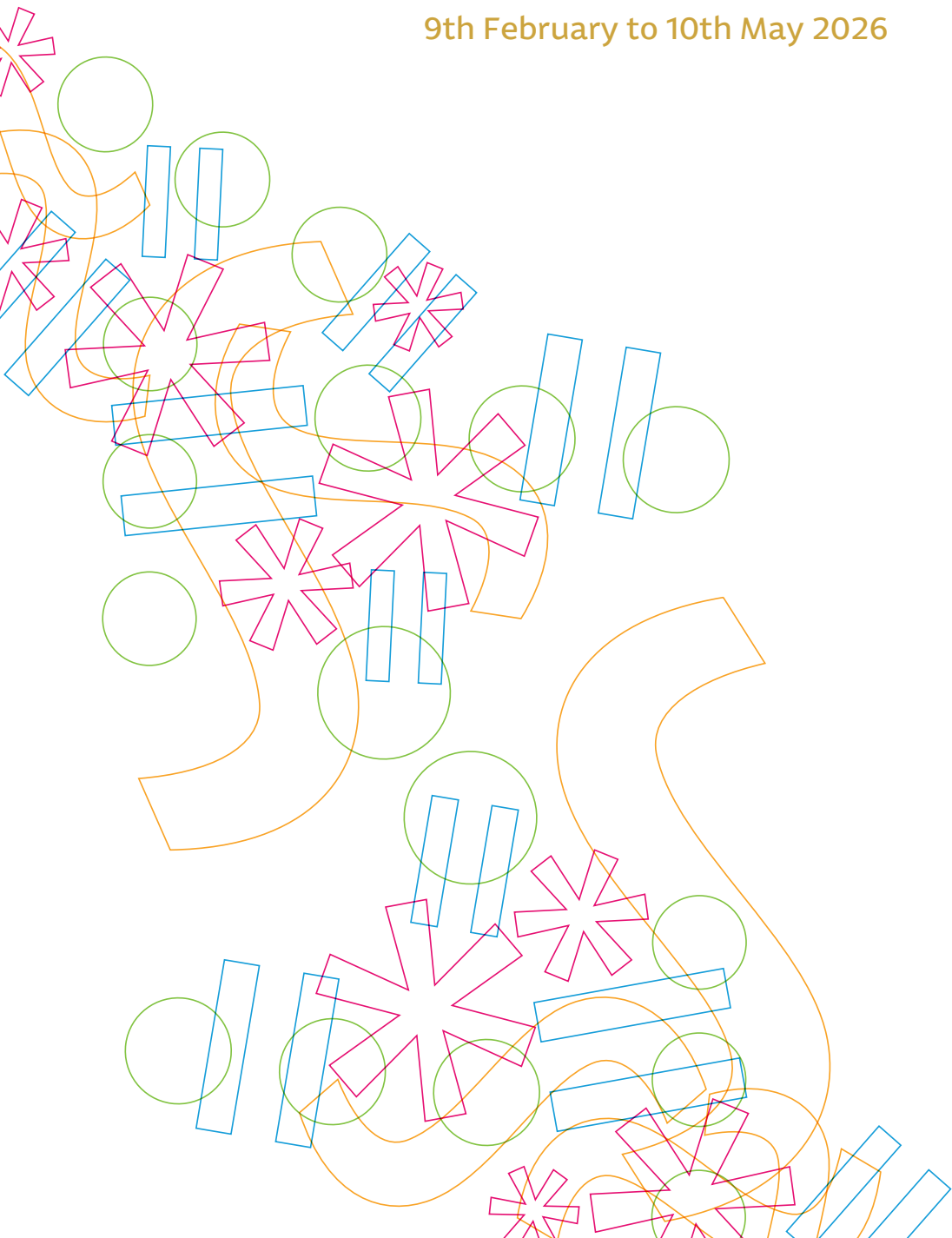
### Note for courses of Faculty of Science:

B = courses only for Bachelor degree;  
M = courses only for Master degree.



# Summer Semester 2025/2026

9th February to 10th May 2026



Course title	Number of ECTS credits	Code
<b>CULTURE STUDIES II.</b>		
Importance of Values in the Changing World . . . . .	4	KKNS/PIVAL
Modern History . . . . .	3	KKNS/ADEMO
NGO Managment and Public Governance . . . . .	2	KKNS/AMNEO
Theory of Culture 2: Anthropology of Family and Kinship . . . . .	4	KKNS/ATEK2

## CZECH LANGUAGE FOR FOREIGNERS II.

Czech for Foreigners. . . . .	4	KČJL/ZCFOR
Introduction to Cognitive Linguistics and to Linguistics Interpretations of the World . . . . .	1	KČJL/NSICL

## EDUCATION AND TEACHING ORIENTATION II.

Drama in Education . . . . .	4	ÚPPSP/ZZDRM
Effective Educational Methods . . . . .	4	KPP/ZPEDF
School Management and Educational Evaluation . . . . .	4	ÚPPSP/ZSMEE
Teaching Theory . . . . .	4	KPP/ZTETH
Education with and towards Diversity: Transcultural and Global Development Education . . . . .	2	KKNS/AGLOV

## ENGLISH LANGUAGE AND CULTURE II.

Chapters from Culture and Literature of English–Speaking Countries 4 (USA) . . . . .	3	KAJL/BADK4
English for Primary School Teachers 2 (B1) *. . . . .	2	KAJL/PZAJ2
Children's Literature in English . . . . .	2	KAJL/PADLT
English for Primary School Teachers 4 (B1) *. . . . .	2	KAJL/PZAJ4
English Speaking Countries 4 . . . . .	3	KAJL/BARE4
English Speaking Countries 2 (USA) . . . . .	1	KAJL/BREL2
Language Practice 4 (C1) *. . . . .	2	KAJL/BACV4
English Stylistics . . . . .	1	KAJL/BASTI
Language and Culture. . . . .	2	KAJL/PAJK1
Speaking Skills in English . . . . .	1	KAJL/BARED
Practical English 1 (B2) . . . . .	2	KAJL/PAAP1

\* only one course of the practical courses in this module can be enrolled

## FRENCH LANGUAGE AND CULTURE II. (in French language only)

Expression écrite 2/Writing Skills in French Language 2 . . . . .	1	KFJL/BPIS2
French Speaking Countries and Conversation in French 2 . . . . .	1	KFJL/BKON2
Géographie et culture de la France 2/French Geography and Culture 2 . . . . .	3	KFJL/BGEO2
Multimedia Seminar in French 2 . . . . .	2	KFJL/BMUS2

## GERMAN LANGUAGE AND CULTURE II. (in German language only)

Deutsche Literatur 1/German Literature 1 . . . . .	2	KNJL/NSNL1
Deutsche Literatur 3/German Literature 3 . . . . .	1	KNJL/NSNL3
Deutsche Sprache der Gegenwart und Landeskunde 2 /Contemporary German Language and Culture 2 . . . . .	5	KNJL/BNSJ2
Deutsche Sprache der Gegenwart und Landeskunde 4 /Contemporary German Language and Culture 4 . . . . .	3	KNJL/BNSJ4
Deutsche Sprache der Gegenwart und Landeskunde 6 /Contemporary German Language and Culture 6 . . . . .	3	KNJL/BNSJ6
Literatur für Kinder und Jugendliche/Children's and Youth Literature . . . . .	2	KNJL/ZNDL1
Konversation in der deutschen Sprache 2 /Conversation in German Language 2 . . . . .	2	KNJL/BNKO2
Landeskunde der deutschsprachigen Länder 2 /Life and Institutions of German Speaking Countries 2 (Germany) . . . . .	3	KNJL/BNRE2
Landeskunde Schweiz /Life and Institutions of German Speaking Countries 4 (Switzerland) . . . . .	3	KNJL/BNRE4
Literaturseminar 3/Literary Seminar 3 . . . . .	1	KNJL/NSNLC
Phonetik der deutschen Sprache 2/Exercises in German Phonetics 2 . . . . .	1	KNJL/BNFN2

## MUSIC ART II.

Choir 2 . . . . .	1	HUDK/BKSB2
History of Czech Music . . . . .	5	HUDK/ZHOCM
Piano Improvisation 2 . . . . .	2	HUDK/PVKI2
Intonation 2 . . . . .	2	HUDK/PKIN2
Orchestra Playing 2 . . . . .	1	HUDK/BXOR2
Playing a Musical Instrument/Solo Singing. . . . . (only for students majoring in music)	6	HUDK/ZPMIS
Playing a Musical Instrument 2 (Piano) . . . . . (only for students minoring in music)	1	HUDK/BKNA2
Voice Education 2 . . . . .	1	HUDK/BKPV2

## PHYSICAL EDUCATION AND SPORTS II.

Atypical Sports Games (for primary education) . . . . .	1	KTVS/PSPHM
Sports games 5 – Atypical Games (for lower secondary school) . . . . .	1	KTVS/BSPH5
Non Traditional Games (for secondary education) . . . . .	1	KTVS/BNEHR
Psychomotoricity (for lower secondary school) . . . . .	1	KTVS/BPSYM

## PSYCHOLOGY AND RESEARCH METHODOLOGY II.

Experimental Psychology and Introduction to Psychometrics . . . . .	3	KPP/ZEPIP
Psychopathology for Teachers . . . . .	4	KPP/ZPSTE



## RUSSIAN LANGUAGE AND CULTURE II. (in Russian language only)

Современный русский язык 6/Contemporary Russian Language 6. . . . .	2	KRJL/BSOR6
Дидактические технологии в обучении русскому языку /Didactic Technology in Teaching Russian . . . . .	1	KRJL/NDITE
Общее языкознание/General Linguistics . . . . .	1	KRJL/NOJAZ
Русская литература 20 века 2/Modern Russian Literature 2. . . . .	2	KRJL/BMDR2
Русский фильм 2/Russian Film 2 . . . . .	2	KRJL/NFIL2
Русский фильм 2/Russian Film 2 . . . . .	2	KRJL/BFIL2
Семинар по русскому языку 2/Russian Language Seminar 2 . . . . .	1	KRJL/NSEM2
Стилистика русского языка/Russian Stylistics . . . . .	2	KRJL/NSTYL
Синтаксис русского языка 1/Russian Syntax 1 . . . . .	2	KRJL/BSYR1
Синтаксис русского языка 3/Russian Syntax 3 . . . . .	2	KRJL/BSYR3

## SOCIAL EDUCATION, SOCIAL ORIENTATION II.

Pathological Phenomena and Prevention. . . . .	4	ÚSS/ZPAPH
Pedagogy of Leisure Time . . . . .	3	ÚSS/ZPEVC
Social Education . . . . .	4	ÚSS/ZSOPE
Roma and Social Exclusion. . . . .	4	ÚSS/ZRSOE
Sociology of Family . . . . .	4	ÚSS/ZSOFA

## SPECIAL EDUCATION NEEDS II.

Introduction to Counselling and Therapy: Theory and Approaches . . . . .	4	ÚSS/ZICAT
Speech and Language Intervention in Mainstream Classroom. . . . .	3	ÚPPSP/ZSLIC
The Specific Learning Difficulties . . . . .	4	ÚPPSP/ZSLDI

## TEACHING AND SOCIAL COMPETENCE PRACTICE II.

Observation Practice in Social Organizations . . . . .	4	ÚSS/ZEXKU
Practice in Kindergarten/Primary School . . . . .	4	ÚPPSP/ZPKPS
Teaching Practice in Lower and Upper Secondary Schools . . . . .	4	SOPDF/ZTPLU

## TECHNICAL SUBJECTS FOR TEACHERS II.

Additive Technology and 3D Printing . . . . .	3	KTP/ZATDP
Creation of Computer Models to Support the Teaching of Technical Subjects . . . . .	3	KTP/ZCCMS

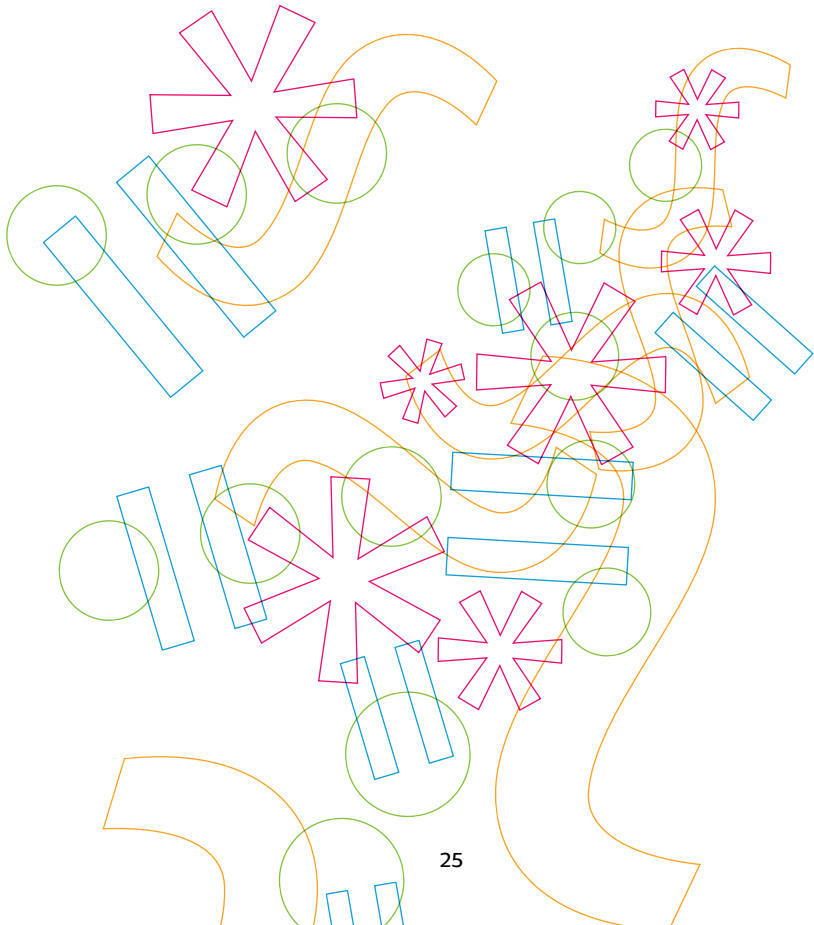
## VISUAL ART II.

Bobbin Lace Production 2 . . . . .	2	KVKTT/BPAL2
Drawing 2 . . . . .	3	KVKTT/AGKR2



Course title	Number of ECTS credits	Code
Academic Writing . . . . .	2	KAL/AAWT
Applied Game Theory . . . . .	6	KIT/ATH
Applied Information Technology . . . . .	2	KIT/AAITE
Applied Statistics . . . . .	6	KIKM/AAPST
Business English II . . . . .	2	KAL/AOBA2
Business Plan . . . . .	4	KE/ABUSP
Computer Architecture . . . . .	5	KIT/AARCH
Computer Networks II . . . . .	5	KIT/APS12
Controlling. . . . .	4	KE/ACONT
Czech Language for Foreigners . . . . .	3	KAL/CZL
Czech Language for Foreigners II . . . . .	3	KAL/CZL2
Data Protection and Information Security . . . . .	4	KIT/AOBDA
Database Systems II . . . . .	5	KIKM/ADBS2
Econometrics . . . . .	4	KIKM/AEMET
English in Practice II . . . . .	2	KAL/KOA2
English in Practice IV . . . . .	2	KAL/KOA4
Enterprise Informatics I. . . . .	3	KIT/APR11
German Language for Foreigners . . . . .	2	KAL/GL
Human Resource Management . . . . .	5	KM/APERI
International Economics . . . . .	4	KE/AMEKO
Internet Marketing. . . . .	5	KM/AINMA
Introduction to Accounting . . . . .	4	KE/AZUCE
Introduction to Enterprise Informatics . . . . .	3	KIT/AUPI
Introduction to Law . . . . .	5	KM/APRV1
Introduction to Mobile Technology. . . . .	4	KIKM/AUMTE
Law III . . . . .	4	KM/APRV3
Logic Programming I. . . . .	5	KIKM/ALP1
Macroeconomics I . . . . .	6	KE/AMAE1
Macroeconomics II . . . . .	5	KE/AMAE2
Management II . . . . .	5	KM/AZMN2
Managerial Communication Skills . . . . .	3	KM/AKDM
Mathematics II . . . . .	7	KIKM/AZMA2
Mathematics for Informatics II . . . . .	7	KIKM/AZMI2
Methods of Operational Research II . . . . .	4	KIKM/AMOV2
Ontologies and Semantic Web . . . . .	5	KIT/AOSW
Operation Systems I. . . . .	5	KIT/AOS11
Operation Systems I . . . . .	6	KIT/AOS1A
Particular Project. . . . .	6	SOFIM/VP
Professional English II. . . . .	2	KAL/OA2
Professional English IV . . . . .	2	KAL/OA4
Programming . . . . .	6	KIKM/APROM
Programming I . . . . .	5	KIKM/APRO1

Sales and Advertising . . . . .	5	KM/ASELL
Sociology and Managerial Psychology. . . . .	4	KM/ASOC
Sports. . . . .	2	KRCR/POHA
Systems Approaches . . . . .	4	KIT/ASYSP
Systems for Management Support II. . . . .	5	KIT/ASPM2
Systems Thinking for Managers. . . . .	4	KIT/ASYM
Theoretical Informatics. . . . .	5	KIKM/ATINF
Theory of Systems I . . . . .	3	KIT/ATES1





Course title	Number of ECTS credits	Code
20th Century Czech History . . . . .	5	KP/CH2PA
Ancient Greek Democracy and its Legacy. . . . .	6	KFSV/AGDAL
Block of Experts Lectures . . . . .	6	KP/EL2PB
Central European Cultural History . . . . .	5	HIU/ECULH
Central European History since 1918 . . . . .	7	HIU/ECEH2
Comparative Political Science Methods . . . . .	5	KP/MP3PA
Cross-Cultural Competence . . . . .	5	KP/CC2PJ
Geopolitical Dimension of Intercultural Communication . . . . .	5	KP/GC2PB
Conceptualization of Totalitarian Regimes. . . . .	4	KSOC/ECTR
Conversation in English. . . . .	3	CJP/COENG
Czech for International Students I . . . . .	6	CJP/CJ1
Czech for International Students II. . . . .	6	CJP/CJ2
Demographic Issues in Contemporary Society. . . . .	3	USP/PADMG
Economic Transformation of Central Europe. . . . .	5	HIU/ETOCE
English for Humanities and Social Sciences . . . . .	4	CJP/EHSS
Ethnic Minorities in Europe . . . . .	3	CJP/EMIE
Experimental Archaeology . . . . .	5	ARCH/QEXAR
Financing Political Competition. . . . .	6	KP/FP2PB
French for International Students 1 . . . . .	4	CJP/IFJ1
French for International Students 2 . . . . .	4	CJP/IFJ2
Fundraising in NGO. . . . .	3	USP/PAFUN
Historical and Political Development of China. . . . .	5	KP/HP2PB
History of Central European Political Thought. . . . .	6	HIU/AACEP
History of Political Thought . . . . .	8	KP/HP2PA
Integration Processes and Politics in Central Europe. . . . .	5	HIU/EINPP
Intellectual Life in the Czech Lands in 16th–19th Centuries. . . . .	6	KPVHA/HSEME
Interaction Between Human and Environment in the Past . . . . .	5	ARCH/MENVI
Introduction to Post-Colonial Theories . . . . .	5	KP/PC4PB
Labour Relations and Discrimination . . . . .	4	KSOC/ELRD
Language, Culture and Politics . . . . .	6	KP/LC4KA
Latin American Politics . . . . .	5	KP/LP2PB
Mediation . . . . .	3	USP/PAMED
Medieval European History . . . . .	6	HIU/AAMEH
Methodological Aspects of Research in Central Europe. . . . .	5	HIU/EMETH
Nationalism in the Central Europe . . . . .	5	HIU/ENATC
Philosophy and Natural Science . . . . .	6	KFSV/KPHIN
Political Ideologies and Central Europe . . . . .	6	HIU/EPOLI
Political Parties and Elections. . . . .	6	KP/PP2PA
Political Philosophy . . . . .	8	KFSV/PPOLP
Political Science Methodology . . . . .	7	KP/PM2PA
Political System of the Czech Republic . . . . .	8	KP/PC2PA
Political Systems of Sub-Saharan Africa 2 . . . . .	7	KP/PA3PA

Politics of the Internet . . . . . 6 KP/PI4PB

Post-classical Archaeology 5th–8th Centuries . . . . . 5 ARCH/QPGPC

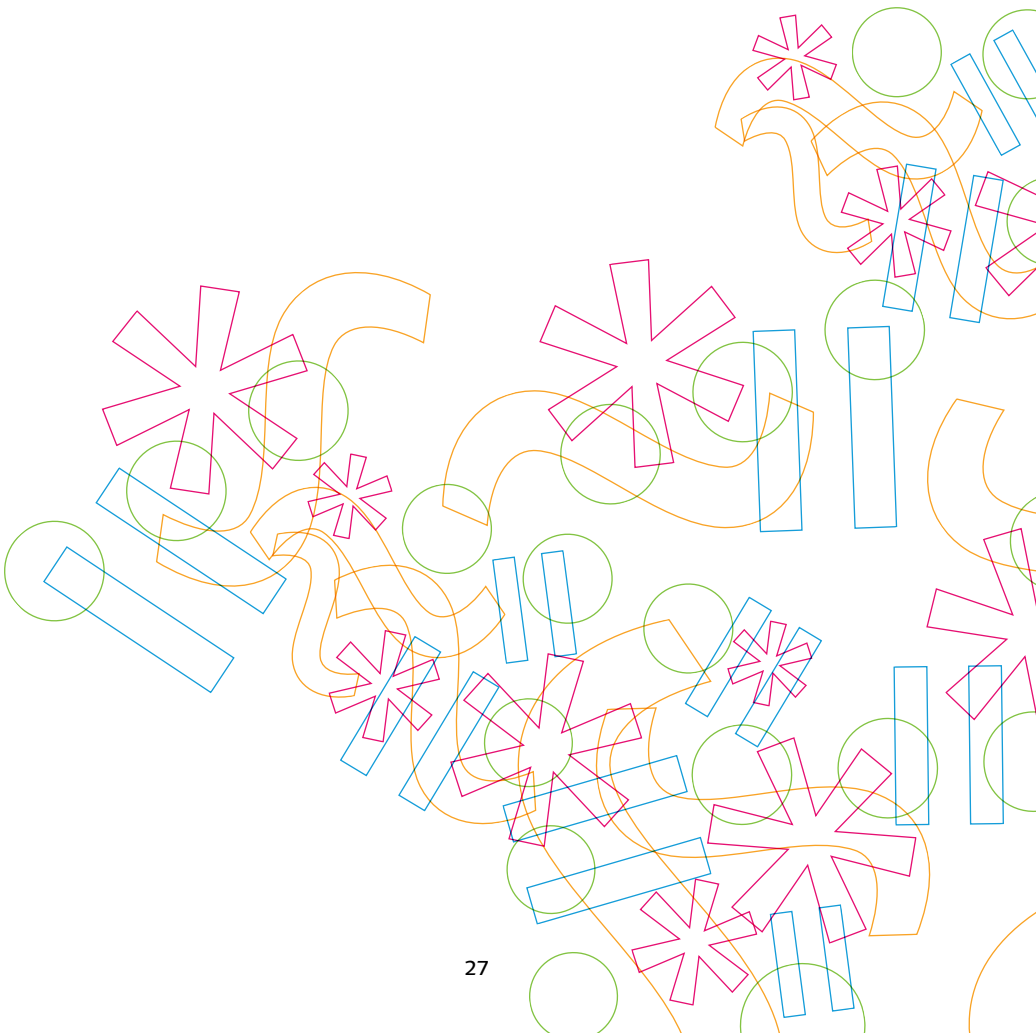
Reflections on Totalitarianism . . . . . 6 KFSV/REFTO

Society and Belonging in Africa . . . . . 5 KP/SB4PB

The Iron Age in Europe’s Western Periphery . . . . . 5 ARCH/QIAEW

Theory of Public Policy . . . . . 5 USP/PATEV

Theory of Welfare State . . . . . 5 USP/PATWS





## Course title

## Number of ECTS credits Degree Code

### BIOLOGY

Animal Ecology . . . . .	4	B	KBI/BEKZI
Comparative Animal Physiology . . . . .	5	B	KBI/BSRFZ
Genetics . . . . .	4	B	KBI/BGENE
Botanical Outdoor Exercises *. . . . .	3	B	KBI/BBOTC
Geological Outdoor Exercises *. . . . .	2	B	KBI/BGETC
Zoological Outdoor Exercises *. . . . .	3	B	KBI/BZCVT
Phylogeny and System of Invertebrates . . . . .	5	B	KBI/BFSBE
Plant Anatomy and Morphology . . . . .	5	B	KBI/BAMRO
Plant Ecology . . . . .	5	B	KBI/BEKRO
Nature protection and Landscape Conservation I. . . . .	3	B	KBI/BOPK1
Methods of Molecular Biology. . . . .	3	M	KBI/NMEMB
Ethology . . . . .	3	M	KBI/NETOL
Forest Ecology . . . . .	4	M	KBI/NEKLE
Genetically Modified Organisms . . . . .	4	M	KBI/NGEMO
Natural Toxins . . . . .	3	M	KBI/NPRT0
Animal Morphology Practice. . . . .	3	M	KBI/NCVMZ
Restoration Ecology . . . . .	5	M	KBI/NEKOB
Zoological Methodology *. . . . .	3	M	KBI/NMEZP

\* these field practices require a certain level of physical fitness, as well as appropriate outdoor equipment

### CHEMISTRY

Analytical Chemistry 2 . . . . .	7	B	KCH/3ANA2
Bachelor Thesis 2 in Chemistry . . . . .	10	B	KCH/3BAP2
Biochemistry . . . . .	6	B	KCH/3BICH
Bioorganic Chemistry . . . . .	6	B	KCH/3BIOR
Chemical and Biological Terrorism . . . . .	2	B	KCH/3CHBT
General and Inorganic Chemistry 2. . . . .	6	B	KCH/3OAN2
Laboratory Practice in Analytical Chemistry 2. . . . .	2	B	KCH/3LAN2
Laboratory Practice in Biochemistry . . . . .	2	B	KCH/3LBCH
Laboratory Practice in Bioorganic Chemistry. . . . .	2	B	KCH/3LBIO
Laboratory Practice in Inorganic Chemistry . . . . .	2	B	KCH/3LANC
Laboratory Practice in Organic Chemistry 1 . . . . .	2	B	KCH/3LOR1
Organic Chemistry 1 . . . . .	4	B	KCH/3ORG1
Reaction Mechanisms in Organic Chemistry . . . . .	5	B	KCH/5REME
Toxicology of Inorganic and Organic Compounds. . . . .	5	B	KCH/3TAOS
Advanced Bioorganic Chemistry . . . . .	6	M	KCH/2PBIO
Diploma Thesis 2 in Chemistry. . . . .	10	M	KCH/2DIP2
Diploma Thesis 4 in Chemistry. . . . .	10	M	KCH/2DIP4
Ecotoxicological Bioassays. . . . .	2	M	KCH/2EKOT
Fundamentals of Biophysical Methods in Biochemistry. . . . .	2	M	KCH/2ZBFM
Laboratory Practice in Advanced Bioorganic Chemistry. . . . .	2	M	KCH/2LBIO



Laboratory Practice in Spectral and Separation Methods. . . . .	2	M	KCH/2LSSM
Mass Spectroscopy . . . . .	6	M	KCH/2HMSM
Stereochemistry . . . . .	4	M	KCH/2STER
Toxicology of Natural and Bioactive Compounds . . . . .	5	M	KCH/2TPBS

## MATHEMATICS

Algebra 2. . . . .	5	B	KMA/BALG2
Algebra 3. . . . .	4	B	KMA/BALG3
Discrete Mathematics. . . . .	2	B	KMA/BZAKO
Chapters on Probability and Statistics . . . . .	2	B	KMA/BKKPS
Geometry 2 . . . . .	4	B	KMA/BGEO2
Geometry 4 . . . . .	3	B	KMA/BGEO4
Introduction to Didactics of Mathematics . . . . .	4	B	KMA/BUDIM
Mathematical Analysis 2 . . . . .	4	B	KMA/BANL2
Introduction to Global Analysis . . . . .	2	M	KMA/NGLAN
Introduction to Representation Theory . . . . .	2	M	KMA/NTERE
Didactics of Mathematics 2 . . . . .	2	M	KMA/NDMA2
Didactic Software . . . . .	2	M	KMA/NDISW
Introduction to Algebraic Geometry . . . . .	2	M	KMA/NUAGE
Methods of Solving Mathematical Tasks 2 . . . . .	2	M	KMA/NMER2
Set Theory . . . . .	2	M	KMA/NTMNO

## PHYSICS

Biophysics . . . . .	3	B	KFY/3FBIO
Physical Biomonitoring, Rad. Protection . . . . .	3	B	KFY/3FBRO
Biomedical Imaging Systems 2 . . . . .	2	B	KFY/3FBZ2
Modeling and Simulation. . . . .	4	B	KFY/3FMOS
Electronics Laboratory Practice. . . . .	3	B	KFY/3FPE
Physical Laboratory Practice 1. . . . .	3	B	KFY/3FPR1
Physical Laboratory Practice 3 . . . . .	4	B	KFY/3FPR3
Theoretical Mechanics 2 . . . . .	3	B	KFY/3FTM2
Physics – Oscillations and Waves. . . . .	4	B	KFY/3FZFK
Physics – Thermal . . . . .	4	B	KFY/3FZFT
Physics – Electricity 1 . . . . .	3	B	KFY/3FZF1
Quantum Physics. . . . .	5	M	KFY/NKF
Theory of Electromagnetic Field . . . . .	4	M	KFY/NTEP

### Note for courses of Faculty of Science:

B = courses only for Bachelor degree;

M = courses only for Master degree.



## ESN Hradec Králové

The biggest non-profit voluntary student association in Europe. The network is constantly developing and expanding and ESN Hradec Králové (ESN HK) is a part of it! After choosing our university for your exchange, chances are you will hear about us. But who are we? And what do we do?

Well, we're all students just like you. And we do a variety of things, including (online) event organization, advocacy towards institutions, HR development, and helping international students' mobilities be more meaningful and unforgettable. At the UHK, ESN HK also organizes pickups from the airport at the beginning of each semester.

**If you are interested in participating in our events, getting in touch with local students, or you are in need of a pickup at the beginning of the semester, don't forget to register at: <https://artemis.esnhk.cz/>**

**Text us if you have any questions: we're on [Instagram \(@esn\\_hk\)](#).**



ARTEMIS REGISTRATION



ESN HK INSTAGRAM



Erasmus Student Network  
**Hradec Králové**



University of Hradec Králové

Rokitanského 62  
500 03 Hradec Králové 3  
Czech Republic

Erasmus ID code: **CZ HRADEC01**



[study@uhk.cz](mailto:study@uhk.cz)



[UniversityofHradecKralove](https://www.facebook.com/UniversityofHradecKralove)



[www.uhk.cz/en](http://www.uhk.cz/en)



[uhk\\_en](https://www.instagram.com/uhk_en)



[University of Hradec Králové](https://www.youtube.com/UniversityofHradecKralove)