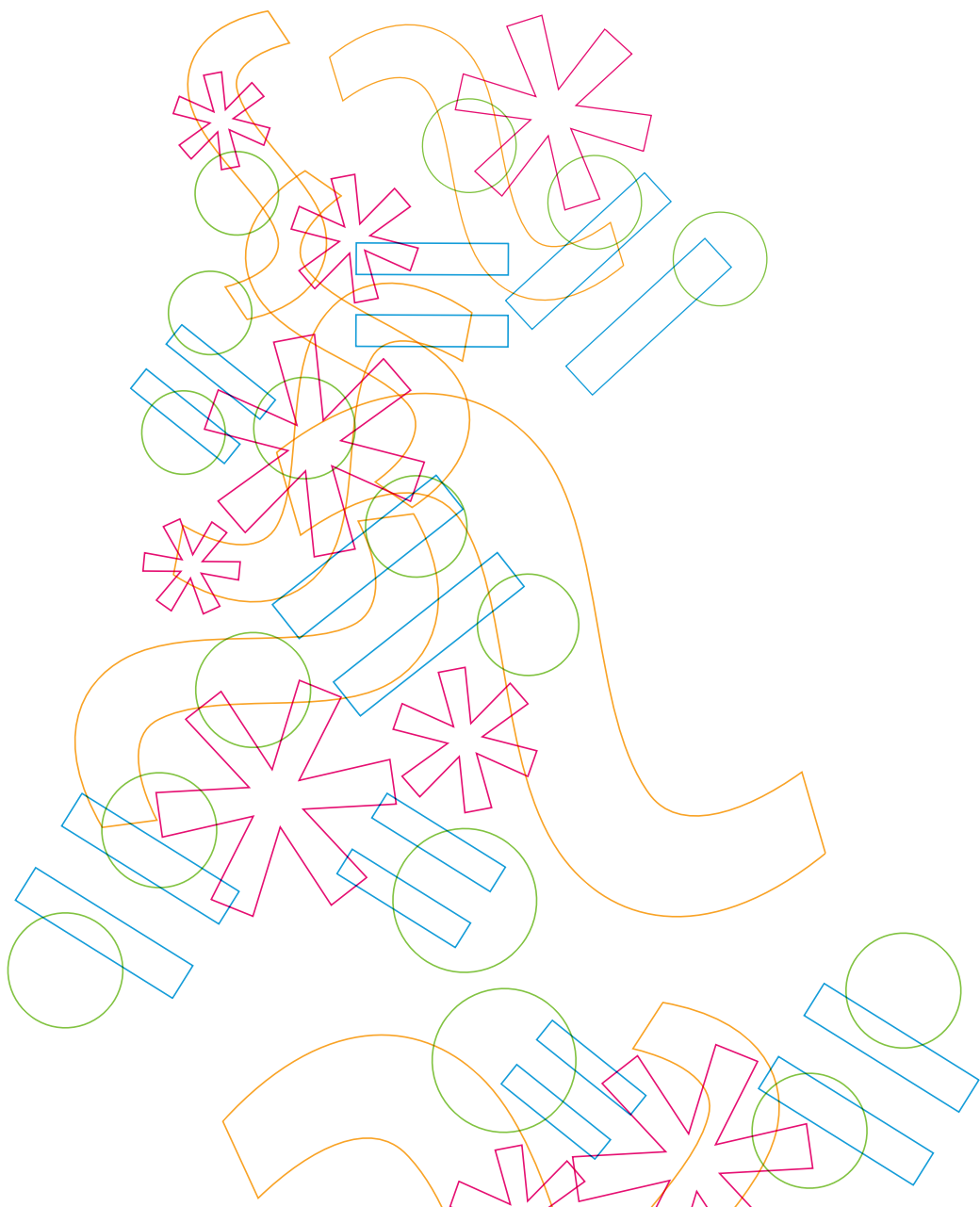




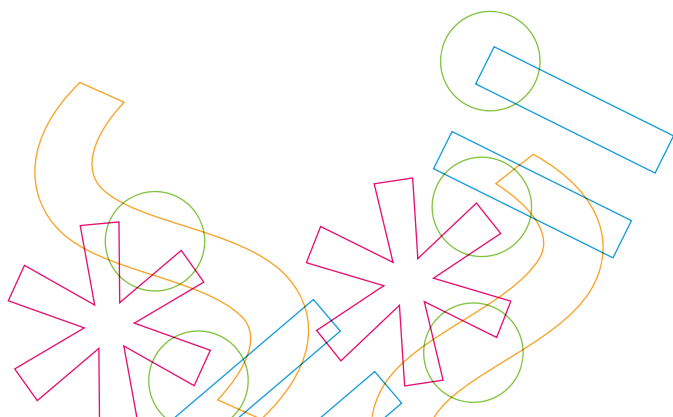
## Course Catalogue 2025/2026

COURSES IN ENGLISH (AND OTHER LANGUAGES)  
FOR INTERNATIONAL STUDENTS



# Content

|   |           |
|---|-----------|
| Register for courses . . . . .                  | 5         |
| Useful information . . . . .                    | 5         |
| Guidelines for selecting courses . . . . .      | 5         |
| Contacts . . . . .                              | 7         |
| <b>Winter Semester 2025/2026 . . . . .</b>      | <b>8</b>  |
| Faculty of Education . . . . .                  | 9         |
| Faculty of Informatics and Management . . . . . | 12        |
| Philosophical Faculty . . . . .                 | 14        |
| Faculty of Science . . . . .                    | 16        |
| <b>Summer Semester 2025/2026 . . . . .</b>      | <b>20</b> |
| Faculty of Education . . . . .                  | 21        |
| Faculty of Informatics and Management . . . . . | 24        |
| Philosophical Faculty . . . . .                 | 26        |
| Faculty of Science . . . . .                    | 28        |
| ESN Hradec Králové . . . . .                    | 31        |





**Co-funded by  
the European Union**

The European Union Commission's support for the production of this publication does not constitute an endorsement of the content, which reflect the views only of the authors, and the Commission cannot be held responsible for any use which may be made of the information contained therein.



## Register for courses

Exchange students from all our partner universities are invited to register for courses with instruction in the English language. Whether the student participates within the Erasmus+ program, or any other exchange program, he/she may opt for a vast selection of courses. The dynamic and youthful University of Hradec Králové – an institution founded in 1959 that has been named as such since 2000 – has currently about 6300 students and provides high-quality tertiary education within a large scope of study fields that comprise social sciences, humanities, educational studies, natural sciences, economics and information technology.

## Useful information

The university campus is situated conveniently in the town center within walking distance of other university buildings, the Educational and Scientific Library, and the old town. Our university has a very well established ESN Hradec Králové. The mission of the volunteering students at the ESN HK is to help with the integration of Erasmus and other international students into the local environment. They will pick you up at the airport, invite you to a welcome week, and organize activities throughout the whole semester. Exchange students are provided with accommodation at the University Halls of Residence Palachova up to available capacity.

**VISA (non-EU citizens):** Foreign citizens who are subject to visa requirement are obliged to apply for a visa prior to their entry into the Czech Republic at an authorized Czech embassy. A visa is not required for EU citizens. It takes at least two months to get a visa, so don't forget to apply on time!

**Other fees:** Valid comprehensive health insurance. Fees for copying and scanning (like for Czech students).

## Guidelines for selecting courses

The academic year is divided into two semesters. The winter semester usually starts the third week of September and ends in December (22nd September to 21st December 2025); the summer semester begins in February and ends in May (9th February to 10th May 2026). Each semester is followed by a 6 week period of exams. Make sure you consult the course offer of the appropriate semester.

The university consists of four parts: **the Faculty of Education, the Faculty of Informatics and Management, the Philosophical Faculty and the Faculty of Science**. Make sure you check the course offer of the appropriate faculty that you will be applying for.

Incoming students choose courses from their receiving faculty. However, it is also possible to register for courses from other faculties. In that case, courses that correspond to at least 75% of credits selected by the student have to be registered at the receiving faculty.

**Please note that the course offer provided in this catalogue is subject to change and the University of Hradec Králové reserves the right to modify it. Do not hesitate to contact the international offices of the respective faculties for any information (see the contact list).**

Scan the QR code for course syllabi and detailed information about each course. Most faculties offer courses for all degrees of study. The Faculty of Science has courses divided. You may also contact the international office of the faculty you apply to for further information.



PORTAL UHK – IS/STAG



## Contacts

---

**Name of the institution:** University of Hradec Králové

---

**Address:** Rokitanského 62  
500 03 Hradec Králové  
Czech Republic

---

**Erasmus ID code:** CZ HRADEC01

---

---

**Faculty of Education:** Petra Nosková  
[petra.noskova@uhk.cz](mailto:petra.noskova@uhk.cz)

---

**Faculty of Informatics and Management:** Eva Pospíchalová  
[eva.pospichalova.2@uhk.cz](mailto:eva.pospichalova.2@uhk.cz)

---

**Philosophical Faculty:** Tomáš Herčík  
[ff.internationaloffice@uhk.cz](mailto:ff.internationaloffice@uhk.cz)

---

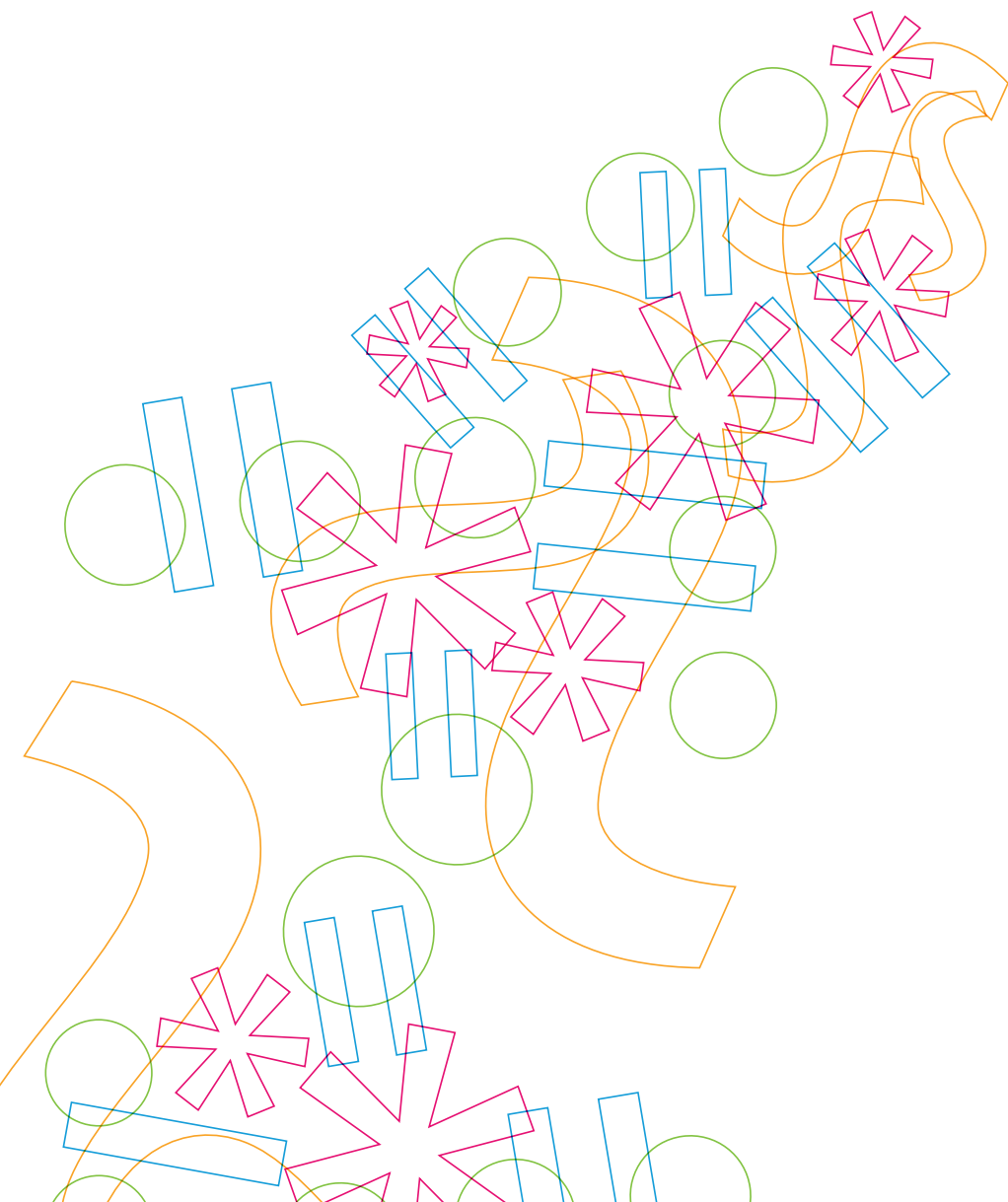
**Faculty of Science:** Pavla Holubová  
[pavla.holubova@uhk.cz](mailto:pavla.holubova@uhk.cz)

---



# Winter Semester 2025/2026

22nd September to 21st December 2025







| Course title  | Number of ECTS credits | Code        |
|---|------------------------|-------------|
| <b>CULTURE STUDIES I.</b>   |                        |             |
| Anthropology of Ritual . . . . .  | 4                      | KKNS/PANRY  |
| Culture and Nature – Anthropology of Mutual Entanglement . . . . .                      | 4                      | KKNS/PCUNA  |
| Ethical Bases of Transcultural Communication 3 (Bioethics) . . . . .                    | 4                      | KKNS/AEV3   |
| Ethnic and National Minorities in CZ and EU . . . . .                                   | 3                      | KKNS/AETNA  |
| General History . . . . .   | 3                      | KKNS/AOBDE  |
| Phenomenon of National and Ethnic Injustice in Modern History . . . . .                 | 4                      | KKNS/ZPHEI  |
| Anthropology of Homes: European Settlements and Landscapes Through time. . . . .        | 4                      | KKNS/ATEK5  |
| <b>CZECH LANGUAGE FOR FOREIGNERS I.</b>   |                        |             |
| Czech for Foreigners. . . . .   | 4                      | KČJL/ZCFOR  |
| <b>EDUCATION AND TEACHING ORIENTATION I.</b>  |                        |             |
| Philosophy of Education . . . . .   | 2                      | KPP/AFIVY   |
| Comparative Education (for Early Childhood/Preprimary school teachers) . . . . .        | 2                      | ÚPPSP/PNCED |
| Comparative Education (for Primary school teachers) . . . . .                           | 4                      | ÚPPSP/PZCED |
| <b>ENGLISH LANGUAGE AND CULTURE I.</b>  |                        |             |
| Chapters from Culture and Literature of English Speaking Countries1 (England) . . . . . | 2                      | KAJL/BADK1  |
| Anglophone Literatures 1. . . . .   | 3                      | KAJL/NSAL1  |
| English Speaking Countries 1 (United Kingdom) . . . . .                                 | 3                      | KAJL/BARE1  |
| English Speaking Countries 3 (USA) . . . . .  | 3                      | KAJL/BARE3  |
| English for Primary School Teachers 1. . . . .  | 1                      | KAJL/PZA11  |
| English Speaking Countries 1 (United Kingdom + Ireland) . . . . .                       | 1                      | KAJL/BREL1  |
| Language Practice 3 (C1) * . . . . .  | 2                      | KAJL/BACV3  |
| English Speaking Countries 3 (USA + Canada) . . . . .                                   | 1                      | KAJL/BREL3  |
| English Speaking Countries 5 (Australia + New Zealand) . . . . .                        | 3                      | KAJL/BARE5  |
| Practical English (C1) * . . . . .  | 2                      | KAJL/NZPAJ  |
| Writing Skills in English. . . . .  | 2                      | KAJL/BAPIP  |
| Practical English III (B2) . . . . .  | 2                      | KAJL/PAAP3  |
| Practical Seminar in English Phonetics . . . . .  | 2                      | KAJL/BAFCV  |
| <i>* only one course of the practical courses in this module can be enrolled</i>        |                        |             |
| <b>FRENCH LANGUAGE AND CULTURE I. (in French language only)</b>                         |                        |             |
| Expression écrite 1/Writing Skills in French Language 1. . . . .                        | 1                      | KFJL/BPIS1  |
| French Speaking Countries and Conversation in French 1. . . . .                         | 1                      | KFJL/BKON1  |
| Géographie et culture de la France 1/French Geography and Culture 1. . . . .            | 2                      | KFJL/BGEO1  |
| Multimedia Seminar in French 1. . . . .   | 2                      | KFJL/BMUS1  |

## GERMAN LANGUAGE AND CULTURE I. (in German language only)

|   |   |            |
|---|---|------------|
| Deutsche Literatur 2/German Literature 2 . . . . .  | 1 | KNJL/NSNL2 |
| Deutsche Sprache der Gegenwart 1<br>/Contemporary German Language and Culture 1 . . . . .                               | 4 | KNJL/BNSJ1 |
| Deutsche Sprache der Gegenwart 3<br>/Contemporary German Language and Culture 3 . . . . .                               | 3 | KNJL/BNSJ3 |
| Deutsche Sprache und Landeskunde 5<br>/Contemporary German Language and Culture 5 . . . . .                             | 2 | KNJL/BNSJ5 |
| Historische Entwicklung der deutschen Sprache<br>/History of German Language . . . . .                                  | 2 | KNJL/NSHIS |
| Konversation in der deutschen Sprache 1<br>/Conversation in German Language 1 . . . . .                                 | 3 | KNJL/PNKV1 |
| Landeskunde der deutschsprachigen Länder 1<br>/Life and Institutions of German Speaking Countries 1 (Germany) . . . . . | 3 | KNJL/BNRE1 |
| Landeskunde Österreich<br>/Life and Institutions of German Speaking Countries 3 (Austria) . . . . .                     | 3 | KNJL/BNRE3 |
| Morphologie der deutschen Sprache der Gegenwart<br>/Morphology of Contemporary German Language . . . . .                | 4 | KNJL/NSNMO |
| Phonetik der deutschen Sprache 1/German Phonetics. . . . .  | 3 | KNJL/BNFN1 |

## MUSIC ART I.

|  |   |            |
|--|---|------------|
| Choir 1 . . . . .                                  | 1 | HUDK/BKSB1 |
| History of European Music . . . . .                | 5 | HUDK/ZHOEM |
| Piano Improvisation 1 . . . . .                    | 1 | HUDK/PVKI1 |
| Intonation 1 . . . . .                             | 2 | HUDK/PKIN1 |
| Orchestra Playing 1 . . . . .                      | 1 | HUDK/BXOR1 |
| Playing a Musical Instrument/Solo Singing. . . . . | 6 | HUDK/ZPMIS |
| (only for students majoring in music)              |   |            |
| Playing a Musical Instrument 1 (Piano . . . . .    | 1 | HUDK/BKNA1 |
| (only for students minoring in music)              |   |            |
| Voice Education 1. . . . .                         | 1 | HUDK/BKPV1 |

## PHYSICAL EDUCATION AND SPORTS I.

|  |   |            |
|--|---|------------|
| English Terminology in Physical Education. . . . . | 2 | KTVS/BATER |
| PE games (for lower secondary school) . . . . .    | 1 | KTVS/BPOHR |
| Sport Games 1 (Handball and Floorball). . . . .    | 2 | KTVS/BSPH1 |
| Sport Games A (Volleyball). . . . .                | 1 | KTVS/BSPHA |
| Sport Games B (Basketball) . . . . .               | 1 | KTVS/BSPHB |

## PSYCHOLOGY AND RESEARCH METHODOLOGY I.

|  |   |            |
|--|---|------------|
| Basics of Qualitative Research 2 . . . . . | 4 | KKNS/PBQR2 |
|--|---|------------|

## RUSSIAN LANGUAGE AND CULTURE I. (in Russian language only)

Язык как средство социального взаимодействия

|  |   |            |
|--|---|------------|
| /Language as a Means of Social Interaction . . . . .   | 2 | KRJI/NJASI |
| Русская литература 20 века 1/Modern Russian Literature 1 . . . . .   | 2 | KRJI/BMDR1 |
| Русская культура и литература в контексте цифровых технологий<br>/Russian Culture and Literature in the Context of Digital Media . . . . . | 2 | KRJI/BRDIG |
| Русский фильм 1/Russian film 1 . . . . .   | 2 | KRJI/NFIL1 |
| Русский фильм 1/Russian film 1 . . . . .   | 2 | KRJI/BFIL1 |
| Семинар по русскому языку 1/Russian Language Seminar 1 . . . . .   | 2 | KRJI/NSEM1 |
| Синтаксис русского языка/Russian Syntax . . . . .  | 3 | KRJI/NSYRU |
| Синтаксис русского языка 2/Russian Syntax 2 . . . . .  | 2 | KRJI/BSYR2 |

## SOCIAL EDUCATION, SOCIAL ORIENTATION I.

|                                       |   |            |
|---------------------------------------|---|------------|
| Introduction into Sociology . . . . . | 2 | KKNS/AUDOS |
| Sociology of Family . . . . .         | 4 | ÚSS/ZSOFA  |

## SPECIAL EDUCATION NEEDS I.

|  |   |             |
|--|---|-------------|
| Education of Children with Special Needs in Practice . . . . .           | 4 | ÚPPSP/ZEDCS |
| Introduction to Counselling and Therapy: Theory and Approaches . . . . . | 4 | ÚSS/ZICAT   |
| Speech and Language Intervention in Mainstream Classroom. . . . .        | 3 | ÚPPSP/ZSLIC |
| The Specific Learning Difficulties . . . . .                             | 4 | ÚPPSP/ZSLDI |

## TEACHING AND SOCIAL COMPETENCE PRACTICE I.

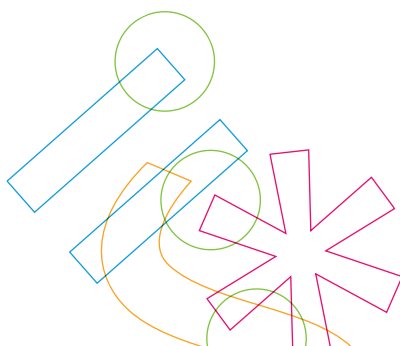
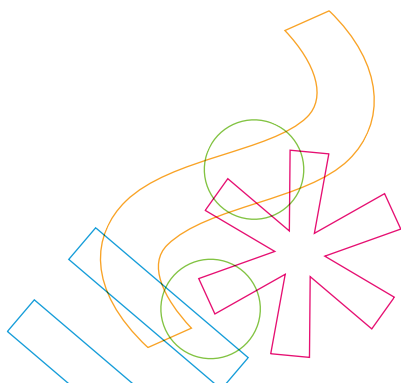
|  |   |             |
|--|---|-------------|
| Observation Practice in Social Organizations . . . . .           | 4 | ÚSS/ZEXKU   |
| Practice in Kindergarten/Primary School . . . . .                | 4 | ÚPPSP/ZPKPS |
| Teaching Practice in Lower and Upper Secondary Schools . . . . . | 4 | SOPDF/ZTPLU |

## TECHNICAL SUBJECTS FOR TEACHERS I.

|   |   |           |
|---|---|-----------|
| The Use of 3D Printing in the Construction of Prototypes<br>and the Development of Student Creativity . . . . . | 3 | KTP/ZUPIC |
| Trends in Modern Technology . . . . .   | 1 | KTP/NZTMT |

## VISUAL ART I.

|                                   |   |             |
|-----------------------------------|---|-------------|
| Bobbin Lace Production 1. . . . . | 2 | KVKTT/BPAL1 |
| Drawing 1. . . . .                | 3 | KVKTT/AGKR1 |

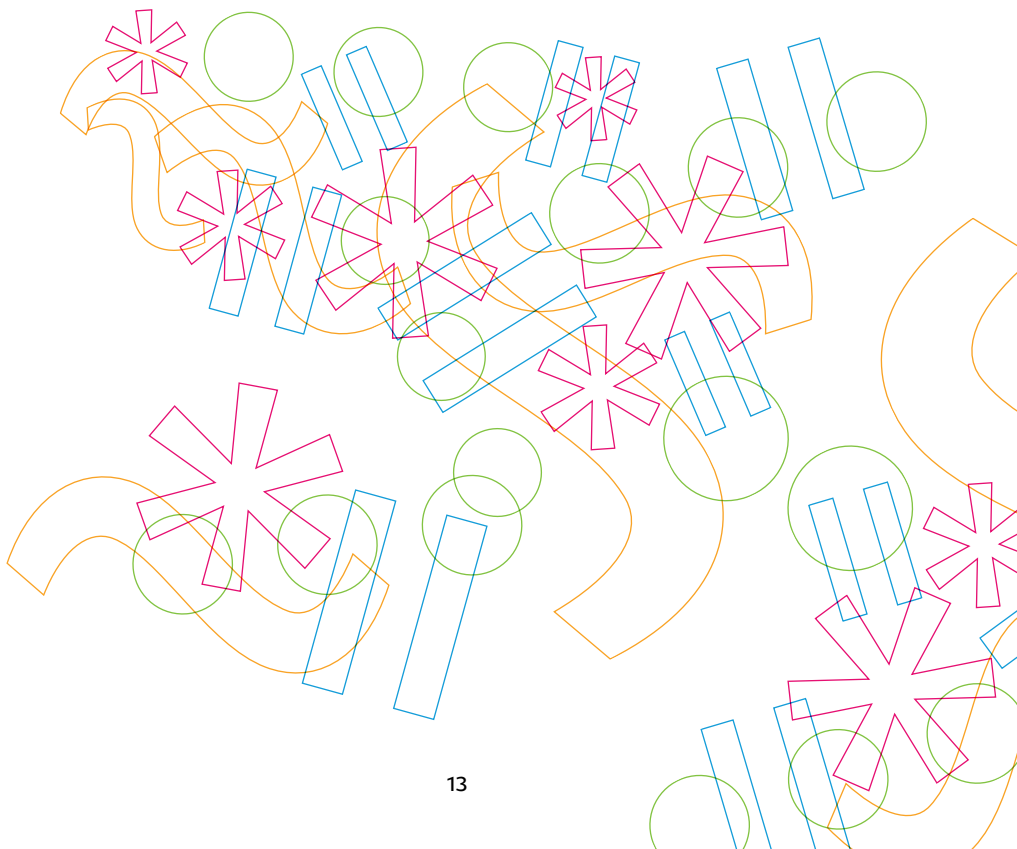




| Course title  | Number of ECTS credits | Code       |
|---|------------------------|------------|
| Academic Writing . . . . .                                | 2                      | KAL/AAWT   |
| Advanced Technology and Technics in Programming . . . . . | 6                      | KIKM/APPRO |
| Algorithms and Data Structures . . . . .                  | 5                      | KIKM/AALGD |
| Autonomous Systems . . . . .                              | 5                      | KIT/AAUTS  |
| Basics of Banking. . . . .                                | 4                      | KE/ABNK    |
| Basics of Finance . . . . .                               | 3                      | KE/AZAFI   |
| Basics of International Accounting. . . . .               | 4                      | KE/AZMU    |
| Business Economic. . . . .                                | 5                      | KE/ANOP    |
| Business Economics II . . . . .                           | 4                      | KE/ANOP2   |
| Business English I . . . . .                              | 2                      | KAL/AOBA1  |
| Complex Systems . . . . .                                 | 5                      | KIT/AKOS   |
| Computer Graphics III . . . . .                           | 6                      | KIKM/APGR3 |
| Computer Networks I . . . . .                             | 5                      | KIT/APS11  |
| Corporate Communication . . . . .                         | 3                      | KAL/CORPC  |
| Crisis Management . . . . .                               | 4                      | KM/AKRMN   |
| Czech Language for Foreigners . . . . .                   | 3                      | KAL/CZL    |
| Database Systems I . . . . .                              | 6                      | KIKM/ADBS  |
| Discrete Methods and Optimization. . . . .                | 5                      | KIKM/ADMO  |
| English in Practice I . . . . .                           | 2                      | KAL/KOA1   |
| English in Practice III. . . . .                          | 2                      | KAL/KOA3   |
| Enterprise Informatics II . . . . .                       | 6                      | KIT/APRI2  |
| German Language for Foreigners. . . . .                   | 2                      | KAL/GL     |
| International Trade . . . . .                             | 4                      | KE/AMEZO   |
| Introduction to Object Modelling. . . . .                 | 5                      | KIT/AUOMO  |
| Introduction to Programming . . . . .                     | 3                      | KIKM/AUPRO |
| Law II . . . . .  | 4                      | KM/APRV2   |
| Logistics . . . . .                                       | 4                      | KM/ALOGI   |
| Management I. . . . .                                     | 3                      | KM/AZMN1   |
| Managerial Accounting . . . . .                           | 4                      | KE/AMNGU   |
| Managerial Methods. . . . .                               | 5                      | KM/AMAME   |
| Marketing . . . . .                                       | 4                      | KM/AMRKT   |
| Marketing Research . . . . .                              | 4                      | KM/AMAVY   |
| Mathematics I. . . . .                                    | 7                      | KIKM/AZMA1 |
| Mathematics for Informatics I. . . . .                    | 7                      | KIKM/AZMI1 |
| Methods of Operational Research I . . . . .               | 5                      | KIKM/AMOV1 |
| Microeconomics I. . . . .                                 | 6                      | KE/AMIE1   |
| Microeconomics II . . . . .                               | 5                      | KE/AMIE2   |
| Numerical and Computational Mathematics. . . . .          | 6                      | KIKM/ANUMA |
| Object Modelling I . . . . .                              | 5                      | KIT/AOMO1  |
| Particular Project. . . . .                               | 6                      | SOFIM/VP   |
| Principles of Computers. . . . .                          | 5                      | KIT/APRIP  |
| Probability and Statistics. . . . .                       | 6                      | KIKM/APSTE |



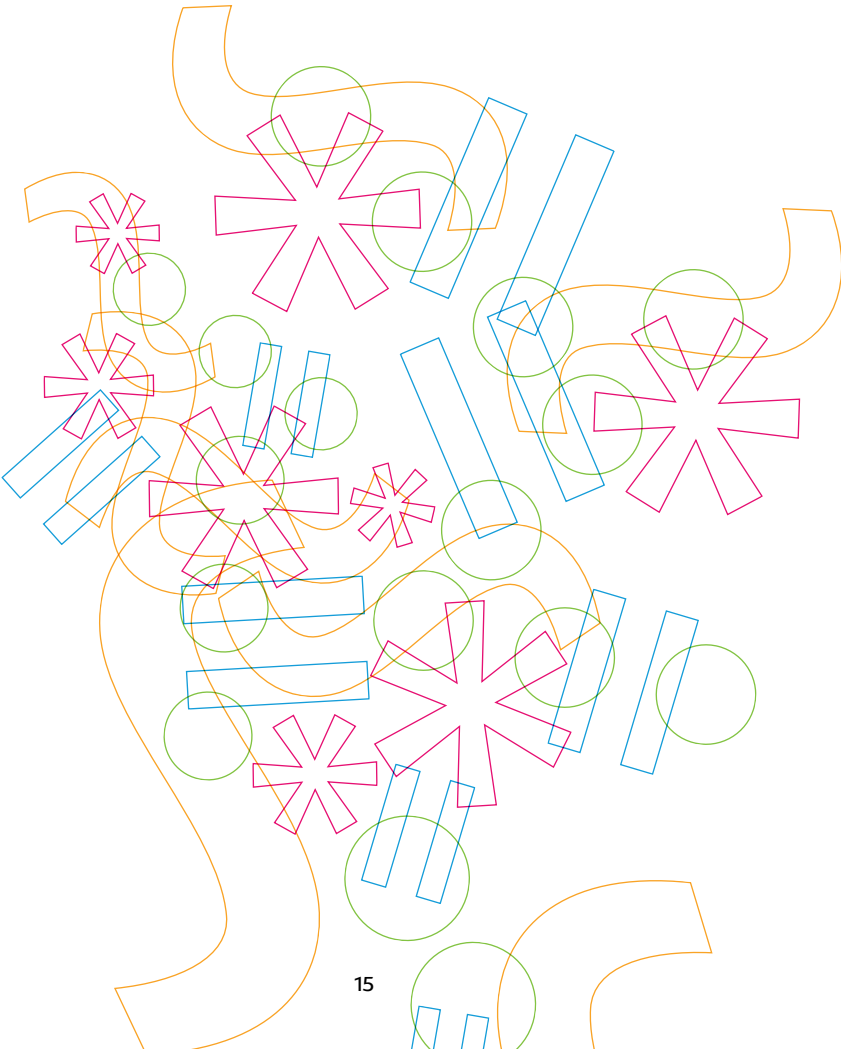
|   |   |            |
|---|---|------------|
| Professional English I . . . . .            | 2 | KAL/OA1    |
| Professional English III . . . . .          | 2 | KAL/OA3    |
| Programming II . . . . .                    | 6 | KIKM/APRO2 |
| Project Management . . . . .                | 5 | KIT/ARPRO  |
| Psychology I . . . . .                      | 4 | KM/APSY1   |
| Psychology III . . . . .                    | 4 | KM/APSY3   |
| Public Sector Economy . . . . .             | 4 | KE/AEVES   |
| Sports. . . . .                             | 2 | KRCR/POHA  |
| Statistical Models and Data . . . . .       | 6 | KIKM/ASTMO |
| Systems for Management Support I . . . . .  | 5 | KIT/ASPM1  |
| Technologies for WEB Publishing I . . . . . | 5 | KIT/ATPW1  |
| Technology and Knowledge Transfer . . . . . | 3 | KIT/ATZT   |
| Theory of Systems II . . . . .              | 5 | KIT/ATES2  |





| Course title   | Number of ECTS credits | Code        |
|--|------------------------|-------------|
| 20th Century World History . . . . .   | 5                      | KP/WH2PA    |
| A History of the Book . . . . .  | 3                      | KPVHA/MPHOB |
| Block of Experts Lectures . . . . .  | 6                      | KP/EL2PB    |
| Central European History 1781–1918 . . . . .                                       | 7                      | HIU/ECEH1   |
| Central European Politics. . . . .   | 6                      | HIU/ECEPO   |
| Central European Social Systems in Comparative Perspective. . . . .                | 5                      | HIU/ESYST   |
| Combatting Corruption . . . . .  | 5                      | KP/CC2PB    |
| Comparative Politics. . . . .  | 8                      | KP/CP2PA    |
| Concepts of Central Europe . . . . .   | 5                      | HIU/ECOCE   |
| Conversation in English. . . . .   | 3                      | CJP/COENG   |
| Cross-Cultural Competence . . . . .  | 5                      | KP/CC4PB    |
| Czech for International Students I . . . . .                                       | 6                      | CJP/CJ1     |
| Czech for International Students II. . . . .                                       | 6                      | CJP/CJ2     |
| English for humanities and social sciences. . . . .                                | 4                      | CJP/EHSS    |
| Ethical Theories in Social Work . . . . .  | 5                      | USP/PAETI   |
| European Intergation: Polity, Politics and Policy . . . . .                        | 6                      | KP/EP2KA    |
| Film Seminar . . . . .   | 5                      | KP/FS4PB    |
| French for International Students 1 . . . . .                                      | 4                      | CJP/IFJ1    |
| History of the Soviet & Post-Soviet Russia . . . . .                               | 2                      | HIU/PSSMX   |
| Informal Communication Practices in Contemporary International Relations . . . . . | 5                      | KP/RC2PB    |
| Innovations in the Palaeolithic and Mesolithic . . . . .                           | 5                      | ARCH/MINOV  |
| Institutions and Politics of the EU . . . . .                                      | 5                      | KP/EUIP     |
| International Conference Event in Social Work . . . . .                            | 1                      | USP/PACON   |
| International Relations . . . . .  | 8                      | KP/IR2PA    |
| Introduction Seminar to Political Science. . . . .                                 | 10                     | KP/IS2PA    |
| Introduction to Anthropology . . . . .   | 6                      | KP/IA4PA    |
| Introduction to Archaeometallurgy . . . . .  | 4                      | ARCH/MJKIA  |
| Introduction to Political Science . . . . .  | 7                      | KP/IP2PA    |
| Management in Social Work . . . . .  | 5                      | USP/PAMAN   |
| Models of Democracy . . . . .  | 8                      | KP/MD2PA    |
| Modern Political Thought. . . . .  | 8                      | KP/MT2PA    |
| Nonprofit Sector Law . . . . .   | 3                      | USP/PANEZ   |
| Philosophy of Language . . . . .   | 7                      | KFSV/PPLAN  |
| Philosophy of Social Science. . . . .  | 8                      | KFSV/FMPSS  |
| Political Geography of Central Europe. . . . .                                     | 5                      | HIU/EPOGC   |
| Political Systems of Sub-Saharan Africa 2 . . . . .                                | 7                      | KP/PF3PA    |
| Pottery Technology for the Archaeologist . . . . .                                 | 5                      | ARCH/MPOTA  |
| Social Economy. . . . .  | 5                      | USP/PASEK   |
| Reflections on Totalitarianism . . . . .   | 6                      | KFSV/REFTO  |

The Role of Women in Resistance to Totalitarian  
and Post–Totalitarian Regimes in East and Central Europe . . . . . 4 KSOC/ERWR  
Theory of Public Policy . . . . . 3 USP/PATEV  
Theory of Welfare State . . . . . 5 USP/PATWS  
United States from Revolution to the Civil War . . . . . 6 HIU/AAUSA





## Course title

## Number of ECTS credits Degree Code

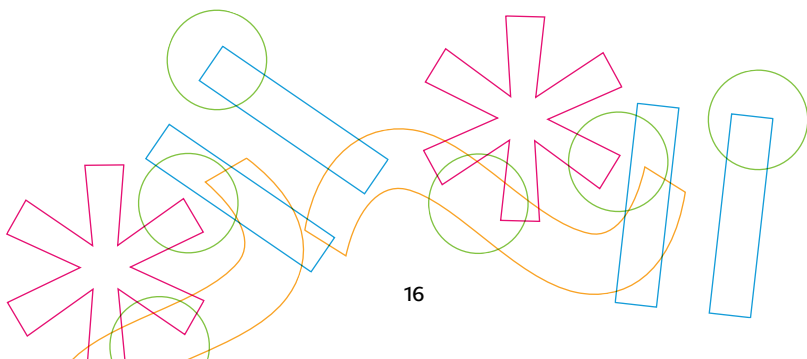
### BIOLOGY

|   |   |   |           |
|---|---|---|-----------|
| Anatomy and Morphology of Animal                | 3 | B | KBI/BAMZI |
| Basic of Ethology                               | 3 | B | KBI/BZAET |
| Basic of Toxicology and Ecotoxicology           | 4 | B | KBI/BZTOE |
| Basics of Cell Biology                          | 5 | B | KBI/BZABB |
| Evolutionary Biology                            | 3 | B | KBI/BEVBI |
| Basics of Geology                               | 4 | B | KBI/BZAGE |
| General Ecology                                 | 4 | B | KBI/BOBEK |
| Human Anatomy                                   | 4 | B | KBI/BANCL |
| Microbiology                                    | 4 | B | KBI/BMIBI |
| Molecular Biology                               | 3 | B | KBI/BMOBI |
| Phylogeny and System of Non-vasculars           | 5 | B | KBI/BFSSO |
| Phylogeny and System of Higher Plants           | 5 | B | KBI/BFSVR |
| Phylogeny and System of Chordates               | 5 | B | KBI/BFSST |
| Plant Physiology                                | 5 | B | KBI/BFYRO |
| Principles of Terraristics                      | 3 | B | KBI/BZTER |
| Biomonitoring                                   | 4 | M | KBI/NBIOM |
| Bryology and Lichenology                        | 3 | M | KBI/NBRLI |
| Developmental Biology                           | 3 | M | KBI/NDEBI |
| Entomology                                      | 3 | M | KBI/NENTO |
| Genomics and Proteomics                         | 5 | M | KBI/NGEPR |
| Mammaliology <sup>1)</sup>                      | 3 | M | KBI/NMAMA |
| Ornithology <sup>2)</sup>                       | 3 | M | KBI/NORNI |
| Parasitology                                    | 3 | M | KBI/NPARA |
| Special Botanical Field Practice *              | 3 | M | KBI/NSBTC |
| Aquatic and Wetland Plants *                    | 4 | M | KBI/NVMRO |
| Nature protection and Landscape Conservation II | 5 | M | KBI/NOPK2 |
| Plant Ecophysiology                             | 6 | M | KBI/NEKFR |

<sup>1)</sup> taught only in odd-numbered academic year

<sup>2)</sup> taught only in even-numbered academic year

\* these field practices require a certain level of physical fitness, as well as appropriate outdoor equipment





## CHEMISTRY

|   |    |   |           |
|---|----|---|-----------|
| Analytical Chemistry 1 . . . . .  | 4  | B | KCH/3ANA1 |
| Bachelor Thesis 1 in Chemistry . . . . .                                  | 5  | B | KCH/3BAP1 |
| Chemical Software and Databases. . . . .                                  | 3  | B | KCH/3CSDA |
| General and Inorganic Chemistry 1. . . . .                                | 4  | B | KCH/3OAN1 |
| Fundamentals in Medicinal Chemistry . . . . .                             | 6  | B | KCH/3FACH |
| Fundamentals in Molecular Modelling . . . . .                             | 4  | B | KCH/3MOMO |
| Fundamentals in Toxicology and Pharmacology . . . . .                     | 5  | B | KCH/3TOFA |
| History of Chemistry. . . . .   | 2  | B | KCH/3HICH |
| Laboratory Practice in Analytical Chemistry 1 . . . . .                   | 2  | B | KCH/3LAN1 |
| Laboratory Practice in Instrumental Methods . . . . .                     | 3  | B | KCH/3LINS |
| Laboratory Practice in Organic Chemistry 2 . . . . .                      | 2  | B | KCH/3LOR2 |
| Laboratory Practice in Physical Chemistry . . . . .                       | 2  | B | KCH/3LFCH |
| Laboratory Technique. . . . .   | 3  | B | KCH/3LABT |
| Methods for Structural Study of Organic Compounds . . . . .               | 3  | B | KCH/3MSOS |
| Organic Chemistry 2. . . . .  | 7  | B | KCH/3ORG2 |
| Physical Chemistry. . . . .   | 6  | B | KCH/3FYCH |
| Practice in Fundamentals of Molecular Modelling . . . . .                 | 3  | B | KCH/3CMOM |
| Toxicology and Analysis of Food . . . . .                                 | 2  | B | KCH/3TOAP |
| Toxicology of Plant and Animal Toxins . . . . .                           | 5  | B | KCH/3TRZJ |
| Advanced Inorganic and Bioinorganic Chemistry . . . . .                   | 4  | M | KCH/2PANC |
| Advanced Medicinal Chemistry . . . . .                                    | 5  | M | KCH/2PFAC |
| Advanced Molecular Modelling . . . . .                                    | 4  | M | KCH/2PMOM |
| Advanced Organic Chemistry . . . . .                                      | 5  | M | KCH/2PORG |
| Applied Toxicology and Ecotoxicology. . . . .                             | 5  | M | KCH/2APTE |
| Biochemical and Molecular Biology Methods . . . . .                       | 6  | M | KCH/2BMBM |
| Bioinformatics and Cheminformatics . . . . .                              | 6  | M | KCH/2BCHI |
| Chromatographic Methods. . . . .  | 6  | M | KCH/2CHRM |
| Diploma Thesis 1 in Chemistry. . . . .                                    | 10 | M | KCH/2DIP1 |
| Diploma Thesis 3 in Chemistry. . . . .                                    | 10 | M | KCH/2DIP3 |
| Heterocyclic Chemistry . . . . .  | 2  | M | KCH/2CHHE |
| Laboratory Practice in Advanced Biochemical Methods . . . . .             | 2  | M | KCH/2LBCH |
| Laboratory Practice in Advanced Molecular Modelling . . . . .             | 2  | M | KCH/2CMOM |
| Laboratory Practice in Advanced Organic Chemistry. . . . .                | 2  | M | KCH/2LORG |
| Laboratory Practice in Biochemical and Molecular Biology Methods. . . . . | 2  | M | KCH/2LBCH |
| Laboratory Practice in NMR . . . . .                                      | 2  | M | KCH/2LNMR |
| Laboratory Practice in Sampling and Sample Preparation . . . . .          | 2  | M | KCH/2LOPV |
| Molecular and Atomic Spectrometry . . . . .                               | 6  | M | KCH/2MASP |
| Pathophysiology and Pathobiochemistry. . . . .                            | 3  | M | KCH/2PAFB |
| Toxicology of Nanoparticles . . . . .                                     | 3  | M | KCH/2TONA |

## MATHEMATICS

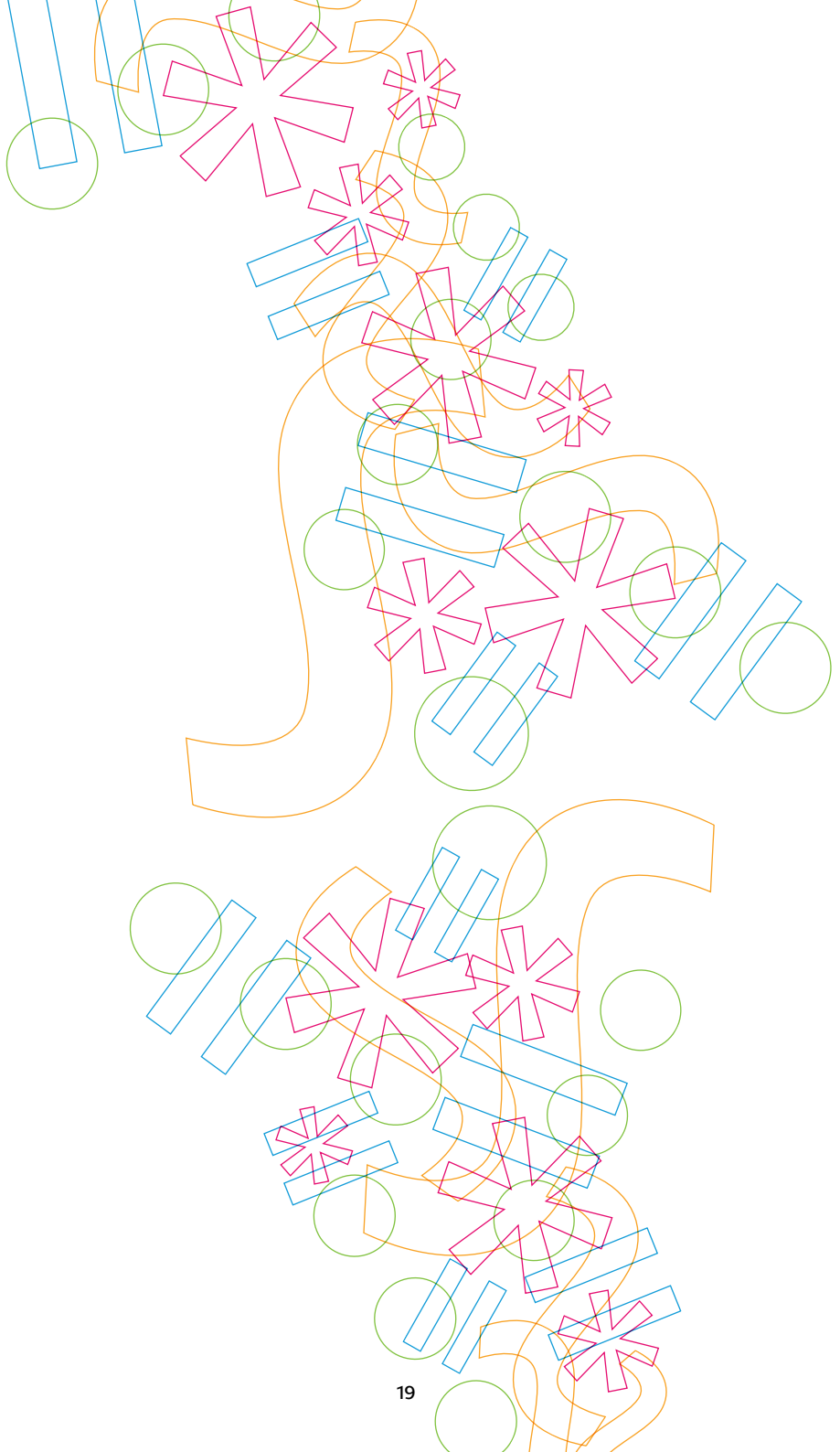
|  |   |   |           |
|--|---|---|-----------|
| Algebra 1 . . . . .  | 6 | B | KMA/BALG1 |
| Geometry 1 . . . . .                                       | 4 | B | KMA/BGEO1 |
| Geometry 3 . . . . .                                       | 3 | B | KMA/BGEO3 |
| Introduction to Mathematics . . . . .                      | 2 | B | KMA/BUSTM |
| Introduction to Topology . . . . .                         | 2 | B | KMA/BZTOP |
| Mathematical Analysis 1 . . . . .                          | 5 | B | KMA/BANL1 |
| Mathematical Analysis 3 . . . . .                          | 3 | B | KMA/BANL3 |
| Mathematical Software. . . . .                             | 1 | B | KMA/BMASW |
| Difference Equations . . . . .                             | 2 | B | KMA/BDIFR |
| Applied Statistics . . . . .                               | 3 | M | KMA/NASTA |
| Didactics of Mathematics 1. . . . .                        | 2 | M | KMA/NDMA1 |
| Financial Mathematics . . . . .                            | 2 | M | KMA/NFINM |
| Graph Theory . . . . .                                     | 3 | M | KMA/NTEOG |
| History of Mathematics. . . . .                            | 2 | M | KMA/NDEJM |
| Introduction to Algebraic Topology . . . . .               | 2 | M | KMA/NUATO |
| Introduction to Theory of Differential Equations . . . . . | 5 | M | KMA/NUTDR |
| Matrix Computations . . . . .                              | 2 | M | KMA/NMATA |
| Differential Geometry of Curves and Surfaces. . . . .      | 2 | M | KMA/NDIGE |
| Methods of Solving Mathematical Tasks 1 . . . . .          | 2 | M | KMA/NMER1 |
| Symplectic Geometry . . . . .                              | 2 | M | KMA/NSYGE |

## PHYSICS

|   |   |   |           |
|---|---|---|-----------|
| Automation and Measurement . . . . .                          | 3 | B | KFY/3FAM  |
| Biomedical Imaging Systems 1 . . . . .                        | 2 | B | KFY/3FBZS |
| Experiments in Modern Physics. . . . .                        | 3 | B | KFY/3FEMF |
| Measurement of Physical Quantities . . . . .                  | 3 | B | KFY/3FMFZ |
| Environmental and Health Monitoring Systems. . . . .          | 3 | B | KFY/3FMSO |
| Physical Laboratory Practice 2 . . . . .                      | 4 | B | KFY/3FPR2 |
| Theoretical Mechanics 1 . . . . .                             | 4 | B | KFY/3FTM1 |
| Fundamentals of Electronics . . . . .                         | 5 | B | KFY/3FZEL |
| Physics – Particles and Fields . . . . .                      | 4 | B | KFY/3FZFC |
| Physics – Mechanics. . . . .                                  | 5 | B | KFY/3FZFM |
| Physics – Electricity 2 . . . . .                             | 5 | B | KFY/3FZF2 |
| Basics of Measuring Instruments. . . . .                      | 2 | B | KFY/3FZMP |
| Astrophysics and Geophysics . . . . .                         | 3 | M | KFY/NASTR |
| Condensed Matter Physics. . . . .                             | 5 | M | KFY/NFPK  |
| Fundamental Experiments and Historical Measurements . . . . . | 3 | M | KFY/NFEHM |
| Theory of Relativity . . . . .                                | 3 | M | KFY/NTR   |

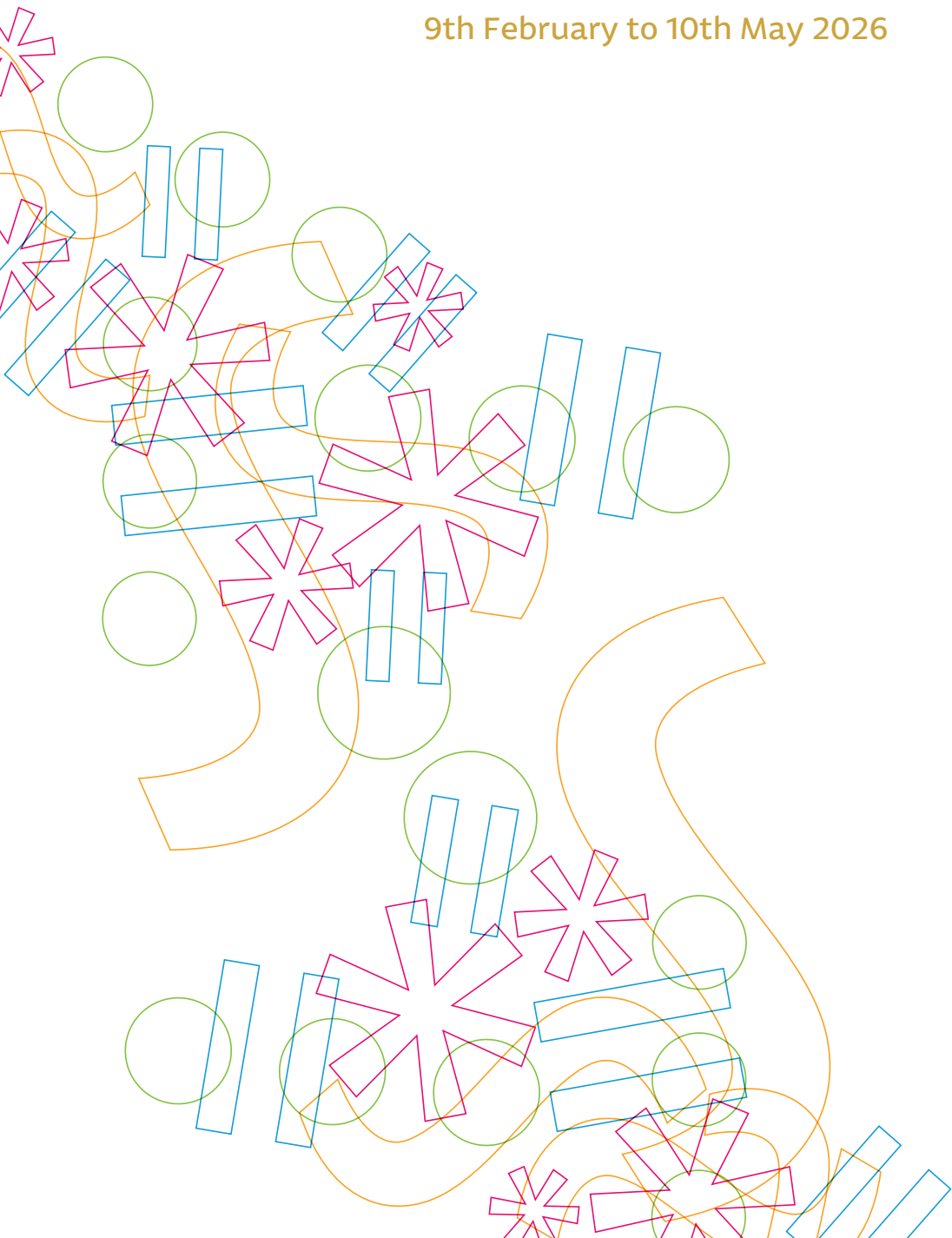
### Note for courses of Faculty of Science:

B = courses only for Bachelor degree;  
M = courses only for Master degree.



# Summer Semester 2025/2026

9th February to 10th May 2026





| Course title  | Number of ECTS credits | Code       |
|---|------------------------|------------|
| <b>CULTURE STUDIES II.</b>  |                        |            |
| Importance of Values in the Changing World . . . . .              | 4                      | KKNS/PIVAL |
| Modern History . . . . .  | 3                      | KKNS/ADEMO |
| NGO Managment and Public Governance . . . . .                     | 2                      | KKNS/AMNEO |
| Theory of Culture 2: Anthropology of Family and Kinship . . . . . | 4                      | KKNS/ATEK2 |

## CZECH LANGUAGE FOR FOREIGNERS II.

|  |   |            |
|--|---|------------|
| Czech for Foreigners. . . . .  | 4 | KČJL/ZCFOR |
| Introduction to Cognitive Linguistics<br>and to Linguistics Interpretations of the World . . . . . | 1 | KČJL/NSICL |

## EDUCATION AND TEACHING ORIENTATION II.

|   |   |             |
|---|---|-------------|
| Drama in Education . . . . .  | 4 | ÚPPSP/ZZDRM |
| Effective Educational Methods . . . . .   | 4 | KPP/ZPEDF   |
| School Management and Educational Evaluation . . . . .  | 4 | ÚPPSP/ZSMEE |
| Teaching Theory . . . . .   | 4 | KPP/ZTETH   |
| Education with and towards Diversity:<br>Transcultural and Global Development Education . . . . . | 2 | KKNS/AGLOV  |

## ENGLISH LANGUAGE AND CULTURE II.

|  |   |            |
|--|---|------------|
| Chapters from Culture and Literature of English-Speaking Countries 4 (USA) . . . . . | 3 | KAJL/BADK4 |
| English for Primary School Teachers 2 (B1) *. . . . .                                | 2 | KAJL/PZAJ2 |
| Children's Literature in English . . . . .   | 2 | KAJL/PADLT |
| English for Primary School Teachers 4 (B1) *. . . . .                                | 2 | KAJL/PZAJ4 |
| English Speaking Countries 4 . . . . .   | 3 | KAJL/BARE4 |
| English Speaking Countries 2 (USA) . . . . .   | 1 | KAJL/BREL2 |
| Language Practice 4 (C1) *. . . . .  | 2 | KAJL/BACV4 |
| English Stylistics . . . . .   | 1 | KAJL/BASTI |
| Language and Culture. . . . .  | 2 | KAJL/PAJK1 |
| Speaking Skills in English . . . . .   | 1 | KAJL/BARED |
| Practical English 1 (B2) . . . . .   | 2 | KAJL/PAAP1 |

\* only one course of the practical courses in this module can be enrolled

## FRENCH LANGUAGE AND CULTURE II. (in French language only)

|   |   |            |
|---|---|------------|
| Expression écrite 2/Writing Skills in French Language 2 . . . . .             | 1 | KFJL/BPIS2 |
| French Speaking Countries and Conversation in French 2 . . . . .              | 1 | KFJL/BKON2 |
| Géographie et culture de la France 2/French Geography and Culture 2 . . . . . | 3 | KFJL/BGEO2 |
| Multimedia Seminar in French 2 . . . . .                                      | 2 | KFJL/BMUS2 |

## GERMAN LANGUAGE AND CULTURE II. (in German language only)

|   |   |            |
|---|---|------------|
| Deutsche Literatur 1/German Literature 1 . . . . .  | 2 | KNJL/NSNL1 |
| Deutsche Literatur 3/German Literature 3 . . . . .  | 1 | KNJL/NSNL3 |
| Deutsche Sprache der Gegenwart und Landeskunde 2<br>/Contemporary German Language and Culture 2 . . . . .               | 5 | KNJL/BNSJ2 |
| Deutsche Sprache der Gegenwart und Landeskunde 4<br>/Contemporary German Language and Culture 4 . . . . .               | 3 | KNJL/BNSJ4 |
| Deutsche Sprache der Gegenwart und Landeskunde 6<br>/Contemporary German Language and Culture 6 . . . . .               | 3 | KNJL/BNSJ6 |
| Literatur für Kinder und Jugendliche/Children's and Youth Literature . . . . .  | 2 | KNJL/ZNDL1 |
| Konversation in der deutschen Sprache 2<br>/Conversation in German Language 2 . . . . .                                 | 2 | KNJL/BNKO2 |
| Landeskunde der deutschsprachigen Länder 2<br>/Life and Institutions of German Speaking Countries 2 (Germany) . . . . . | 3 | KNJL/BNRE2 |
| Landeskunde Schweiz<br>/Life and Institutions of German Speaking Countries 4 (Switzerland) . . . . .                    | 3 | KNJL/BNRE4 |
| Literaturseminar 3/Literary Seminar 3 . . . . .   | 1 | KNJL/NSNLC |
| Phonetik der deutschen Sprache 2/Exercises in German Phonetics 2 . . . . .  | 1 | KNJL/BNFN2 |

## MUSIC ART II.

|   |   |            |
|---|---|------------|
| Choir 2 . . . . .   | 1 | HUDK/BKSB2 |
| History of Czech Music . . . . .  | 5 | HUDK/ZHOCM |
| Piano Improvisation 2 . . . . .   | 2 | HUDK/PVKI2 |
| Intonation 2 . . . . .  | 2 | HUDK/PKIN2 |
| Orchestra Playing 2 . . . . .   | 1 | HUDK/BXOR2 |
| Playing a Musical Instrument/Solo Singing. . . . .<br>(only for students majoring in music) | 6 | HUDK/ZPMIS |
| Playing a Musical Instrument 2 (Piano) . . . . .<br>(only for students minoring in music)   | 1 | HUDK/BKNA2 |
| Voice Education 2 . . . . .   | 1 | HUDK/BKPV2 |

## PHYSICAL EDUCATION AND SPORTS II.

|  |   |            |
|--|---|------------|
| Atypical Sports Games (for primary education) . . . . .                | 1 | KTVS/PSPHM |
| Sports games 5 – Atypical Games (for lower secondary school) . . . . . | 1 | KTVS/BSPH5 |
| Non Traditional Games (for secondary education) . . . . .              | 1 | KTVS/BNEHR |
| Psychomotoricity (for lower secondary school) . . . . .                | 1 | KTVS/BPSYM |

## PSYCHOLOGY AND RESEARCH METHODOLOGY II.

|   |   |           |
|---|---|-----------|
| Experimental Psychology and Introduction to Psychometrics . . . . . | 3 | KPP/ZEPIP |
| Psychopathology for Teachers . . . . .                              | 4 | KPP/ZPSTE |

## RUSSIAN LANGUAGE AND CULTURE II. (in Russian language only)

|  |   |            |
|--|---|------------|
| Современный русский язык 6/Contemporary Russian Language 6. . . . .                                      | 2 | KRJL/BSOR6 |
| Дидактические технологии в обучении русскому языку<br>/Didactic Technology in Teaching Russian . . . . . | 1 | KRJL/NDITE |
| Общее языкознание/General Linguistics . . . . .  | 1 | KRJL/NOJAZ |
| Русская литература 20 века 2/Modern Russian Literature 2. . . . .  | 2 | KRJL/BMDR2 |
| Русский фильм 2/Russian Film 2 . . . . .   | 2 | KRJL/NFIL2 |
| Русский фильм 2/Russian Film 2 . . . . .   | 2 | KRJL/BFIL2 |
| Семинар по русскому языку 2/Russian Language Seminar 2 . . . . .   | 1 | KRJL/NSEM2 |
| Стилистика русского языка/Russian Stylistics . . . . .   | 2 | KRJL/NSTYL |
| Синтаксис русского языка 1/Russian Syntax 1 . . . . .  | 2 | KRJL/BSYR1 |
| Синтаксис русского языка 3/Russian Syntax 3 . . . . .  | 2 | KRJL/BSYR3 |

## SOCIAL EDUCATION, SOCIAL ORIENTATION II.

|  |   |           |
|--|---|-----------|
| Pathological Phenomena and Prevention. . . . . | 4 | ÚSS/ZPAPH |
| Pedagogy of Leisure Time . . . . .             | 3 | ÚSS/ZPEVC |
| Social Education . . . . .                     | 4 | ÚSS/ZSOPE |
| Roma and Social Exclusion. . . . .             | 4 | ÚSS/ZRSOE |
| Sociology of Family . . . . .                  | 4 | ÚSS/ZSOFA |

## SPECIAL EDUCATION NEEDS II.

|  |   |             |
|--|---|-------------|
| Introduction to Counselling and Therapy: Theory and Approaches . . . . . | 4 | ÚSS/ZICAT   |
| Speech and Language Intervention in Mainstream Classroom. . . . .        | 3 | ÚPPSP/ZSLIC |
| The Specific Learning Difficulties . . . . .                             | 4 | ÚPPSP/ZSLDI |

## TEACHING AND SOCIAL COMPETENCE PRACTICE II.

|  |   |             |
|--|---|-------------|
| Observation Practice in Social Organizations . . . . .           | 4 | ÚSS/ZEXKU   |
| Practice in Kindergarten/Primary School . . . . .                | 4 | ÚPPSP/ZPKPS |
| Teaching Practice in Lower and Upper Secondary Schools . . . . . | 4 | SOPDF/ZTPLU |

## TECHNICAL SUBJECTS FOR TEACHERS II.

|   |   |           |
|---|---|-----------|
| Additive Technology and 3D Printing . . . . .                                       | 3 | KTP/ZATDP |
| Creation of Computer Models to Support the Teaching of Technical Subjects . . . . . | 3 | KTP/ZCCMS |

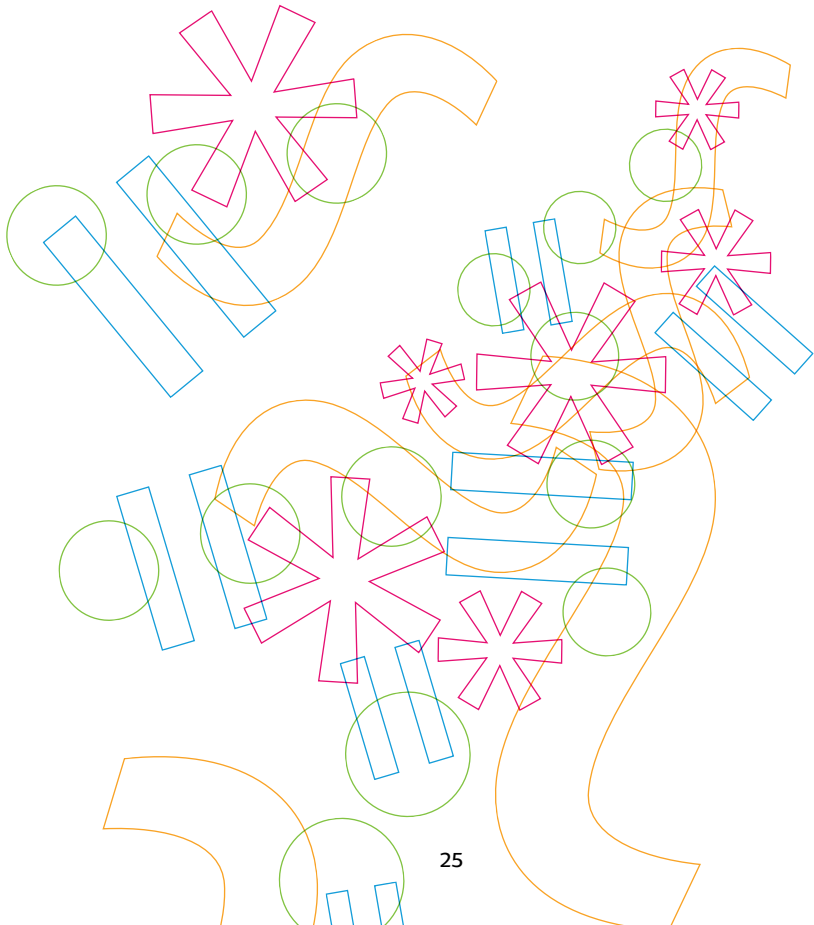
## VISUAL ART II.

|                                    |   |             |
|------------------------------------|---|-------------|
| Bobbin Lace Production 2 . . . . . | 2 | KVKTT/BPAL2 |
| Drawing 2 . . . . .                | 3 | KVKTT/AGKR2 |



| Course title                                       | Number of ECTS credits | Code       |
|--|------------------------|------------|
| Academic Writing . . . . .                         | 2                      | KAL/AAWT   |
| Applied Game Theory . . . . .                      | 6                      | KIT/ATH    |
| Applied Information Technology . . . . .           | 2                      | KIT/AAITE  |
| Applied Statistics . . . . .                       | 6                      | KIKM/AAPST |
| Business English II . . . . .                      | 2                      | KAL/AOBA2  |
| Business Ethics . . . . .                          | 2                      | KAL/AOPE   |
| Business Plan . . . . .                            | 4                      | KE/ABUSP   |
| Computer Architecture . . . . .                    | 5                      | KIT/AARCH  |
| Computer Networks II . . . . .                     | 5                      | KIT/APS12  |
| Controlling. . . . .                               | 4                      | KE/ACONT   |
| Czech Language for Foreigners . . . . .            | 3                      | KAL/CZL    |
| Czech Language for Foreigners II . . . . .         | 3                      | KAL/CZL2   |
| Data Protection and Information Security . . . . . | 4                      | KIT/AOBDA  |
| Database Systems II . . . . .                      | 5                      | KIKM/ADBS2 |
| Econometrics . . . . .                             | 4                      | KIKM/AEMET |
| English in Practice II . . . . .                   | 2                      | KAL/KOA2   |
| English in Practice IV . . . . .                   | 2                      | KAL/KOA4   |
| Enterprise Informatics I. . . . .                  | 3                      | KIT/APRI1  |
| German Language for Foreigners . . . . .           | 2                      | KAL/GL     |
| Human Resource Management . . . . .                | 5                      | KM/APERI   |
| International Economics . . . . .                  | 4                      | KE/AMEKO   |
| Internet Marketing. . . . .                        | 5                      | KM/AINMA   |
| Introduction to Accounting . . . . .               | 4                      | KE/AZUCE   |
| Introduction to Enterprise Informatics . . . . .   | 3                      | KIT/AUPI   |
| Introduction to Law . . . . .                      | 5                      | KM/APRV1   |
| Introduction to Mobile Technology. . . . .         | 4                      | KIKM/AUMTE |
| Introduction to NoSQL . . . . .                    | 6                      | KIKM/ANOSQ |
| Law III . . . . .                                  | 4                      | KM/APRV3   |
| Logic Programming I. . . . .                       | 5                      | KIKM/ALP1  |
| Macroeconomics I . . . . .                         | 6                      | KE/AMAE1   |
| Macroeconomics II . . . . .                        | 5                      | KE/AMAE2   |
| Management II . . . . .                            | 5                      | KM/AZMN2   |
| Managerial Communication Skills . . . . .          | 3                      | KM/AKDM    |
| Mathematics II . . . . .                           | 7                      | KIKM/AZMA2 |
| Mathematics for Informatics II . . . . .           | 7                      | KIKM/AZMI2 |
| Methods of Operational Research II . . . . .       | 4                      | KIKM/AMOV2 |
| Ontologies and Semantic Web . . . . .              | 5                      | KIT/AOSW   |
| Operation Systems I . . . . .                      | 5                      | KIT/AOS11  |
| Operation Systems I . . . . .                      | 6                      | KIT/AOS1A  |
| Particular Project. . . . .                        | 6                      | SOFIM/VP   |
| Professional English II. . . . .                   | 2                      | KAL/OA2    |
| Professional English IV . . . . .                  | 2                      | KAL/OA4    |

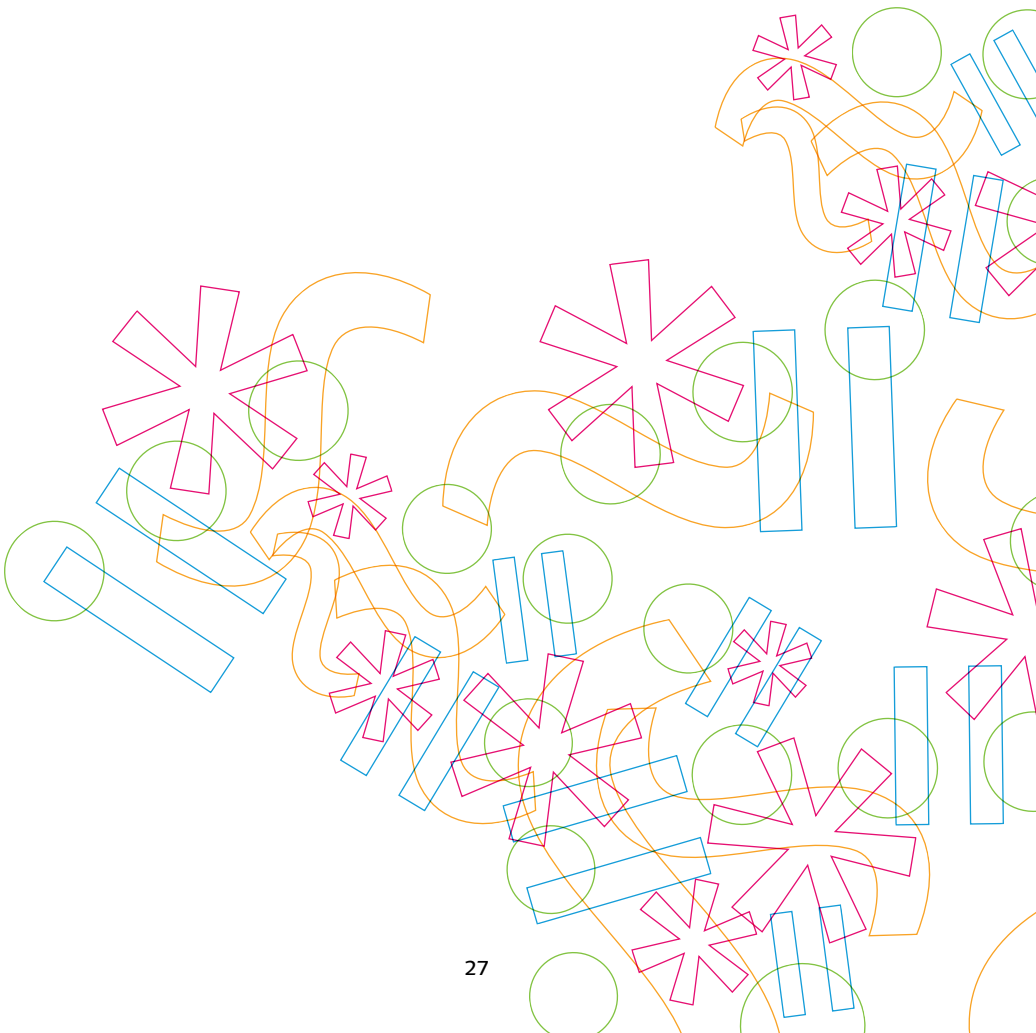
|  |   |            |
|--|---|------------|
| Programming . . . . .                        | 6 | KIKM/APROM |
| Programming I . . . . .                      | 5 | KIKM/APRO1 |
| Sales and Advertising . . . . .              | 5 | KM/ASELL   |
| Sociology and Managerial Psychology. . . . . | 4 | KM/ASOC    |
| Sports. . . . .                              | 2 | KRCR/POHA  |
| Systems Approaches . . . . .                 | 4 | KIT/ASYSP  |
| Systems for Management Support II. . . . .   | 5 | KIT/ASPM2  |
| Systems Thinking for Managers. . . . .       | 4 | KIT/ASYM   |
| Theoretical Informatics . . . . .            | 5 | KIKM/ATINF |
| Theory of Systems I . . . . .                | 3 | KIT/ATES1  |





| Course title   | Number of ECTS credits | Code        |
|--|------------------------|-------------|
| 20th Century Czech History . . . . .                                 | 5                      | KP/CH2PA    |
| Ancient Greek Democracy and its Legacy. . . . .                      | 6                      | KFSV/AGDAL  |
| Block of Experts Lectures . . . . .                                  | 6                      | KP/EL2PB    |
| Central European Cultural History . . . . .                          | 5                      | HIU/ECULH   |
| Central European History since 1918 . . . . .                        | 7                      | HIU/ECEH2   |
| Comparative Political Science Methods . . . . .                      | 5                      | KP/MP3PA    |
| Cross-Cultural Competence . . . . .                                  | 5                      | KP/CC2PJ    |
| Geopolitical Dimension of Intercultural Communication . . . . .      | 5                      | KP/GC2PB    |
| Conceptualization of Totalitarian Regimes. . . . .                   | 4                      | KSOC/ECTR   |
| Conversation in English. . . . .                                     | 3                      | CJP/COENG   |
| Czech for International Students I . . . . .                         | 6                      | CJP/CJ1     |
| Czech for International Students II. . . . .                         | 6                      | CJP/CJ2     |
| Demographic Issues in Contemporary Society. . . . .                  | 3                      | USP/PADMG   |
| Economic Transformation of Central Europe. . . . .                   | 5                      | HIU/ETOCE   |
| English for Humanities and Social Sciences . . . . .                 | 4                      | CJP/EHSS    |
| Ethnic Minorities in Europe . . . . .                                | 3                      | CJP/EMIE    |
| Experimental Archaeology . . . . .                                   | 5                      | ARCH/QEXAR  |
| Financing Political Competition. . . . .                             | 6                      | KP/FP2PB    |
| French for International Students 1 . . . . .                        | 4                      | CJP/IFJ1    |
| French for International Students 2 . . . . .                        | 4                      | CJP/IFJ2    |
| Fundraising in NGO. . . . .  | 3                      | USP/PAFUN   |
| Historical and Political Development of China. . . . .               | 5                      | KP/HP2PB    |
| History of Central European Political Thought. . . . .               | 6                      | HIU/AACEP   |
| History of Political Thought . . . . .                               | 8                      | KP/HP2PA    |
| Integration Processes and Politics in Central Europe. . . . .        | 5                      | HIU/EINPP   |
| Intellectual Life in the Czech Lands in 16th–19th Centuries. . . . . | 6                      | KPVHA/HSEME |
| Interaction Between Human and Environment in the Past . . . . .      | 5                      | ARCH/MENVI  |
| Introduction to Post-Colonial Theories . . . . .                     | 5                      | KP/PC4PB    |
| Labour Relations and Discrimination . . . . .                        | 4                      | KSOC/ELRD   |
| Language, Culture and Politics . . . . .                             | 6                      | KP/LC4KA    |
| Latin American Politics . . . . .                                    | 5                      | KP/LP2PB    |
| Mediation . . . . .  | 3                      | USP/PAMED   |
| Medieval European History . . . . .                                  | 6                      | HIU/AAMEH   |
| Methodological Aspects of Research in Central Europe. . . . .        | 5                      | HIU/EMETH   |
| Nationalism in the Central Europe . . . . .                          | 5                      | HIU/ENATC   |
| Philosophy and Natural Science . . . . .                             | 6                      | KFSV/KPHIN  |
| Political Ideologies and Central Europe . . . . .                    | 6                      | HIU/EPOLI   |
| Political Parties and Elections. . . . .                             | 6                      | KP/PP2PA    |
| Political Philosophy . . . . .                                       | 8                      | KFSV/PPOLP  |
| Political Science Methodology . . . . .                              | 7                      | KP/PM2PA    |
| Political System of the Czech Republic . . . . .                     | 8                      | KP/PC2PA    |
| Political Systems of Sub-Saharan Africa 2 . . . . .                  | 7                      | KP/PA3PA    |

|  |   |            |
|--|---|------------|
| Politics of the Internet . . . . .                     | 6 | KP/PI4PB   |
| Post-classical Archaeology 5th–8th Centuries . . . . . | 5 | ARCH/QPGPC |
| Reflections on Totalitarianism . . . . .               | 6 | KFSV/REFTO |
| Society and Belonging in Africa . . . . .              | 5 | KP/SB4PB   |
| The Iron Age in Europe’s Western Periphery . . . . .   | 5 | ARCH/QIAEW |
| Theory of Public Policy . . . . .                      | 5 | USP/PATEV  |
| Theory of Welfare State . . . . .                      | 5 | USP/PATWS  |







## Course title

## Number of ECTS credits Degree Code

### BIOLOGY

|   |   |   |           |
|---|---|---|-----------|
| Animal Ecology . . . . .                                | 4 | B | KBI/BEKZI |
| Comparative Animal Physiology . . . . .                 | 5 | B | KBI/BSRFZ |
| Genetics . . . . .                                      | 4 | B | KBI/BGENE |
| Botanical Outdoor Exercises *. . . . .                  | 3 | B | KBI/BBOTC |
| Geological Outdoor Exercises *. . . . .                 | 2 | B | KBI/BGETC |
| Zoological Outdoor Exercises *. . . . .                 | 3 | B | KBI/BZCVT |
| Phylogeny and System of Invertebrates . . . . .         | 5 | B | KBI/BFSBE |
| Plant Anatomy and Morphology . . . . .                  | 5 | B | KBI/BAMRO |
| Plant Ecology . . . . .                                 | 5 | B | KBI/BEKRO |
| Nature protection and Landscape Conservation I. . . . . | 3 | B | KBI/BOPK1 |
| Methods of Molecular Biology. . . . .                   | 3 | M | KBI/NMEMB |
| Ethology . . . . .                                      | 3 | M | KBI/NETOL |
| Forest Ecology . . . . .                                | 4 | M | KBI/NEKLE |
| Genetically Modified Organisms . . . . .                | 4 | M | KBI/NGEMO |
| Natural Toxins . . . . .                                | 3 | M | KBI/NPRTO |
| Animal Morphology Practice. . . . .                     | 3 | M | KBI/NCVMZ |
| Restoration Ecology . . . . .                           | 5 | M | KBI/NEKOB |
| Zoological Methodology *. . . . .                       | 3 | M | KBI/NMEZP |

\* these field practices require a certain level of physical fitness, as well as appropriate outdoor equipment

### CHEMISTRY

|   |    |   |           |
|---|----|---|-----------|
| Analytical Chemistry 2 . . . . .                              | 7  | B | KCH/3ANA2 |
| Bachelor Thesis 2 in Chemistry . . . . .                      | 10 | B | KCH/3BAP2 |
| Biochemistry . . . . .  | 6  | B | KCH/3BICH |
| Bioorganic Chemistry . . . . .                                | 6  | B | KCH/3BIOR |
| Chemical and Biological Terrorism . . . . .                   | 2  | B | KCH/3CHBT |
| General and Inorganic Chemistry 2. . . . .                    | 6  | B | KCH/3OAN2 |
| Laboratory Practice in Analytical Chemistry 2. . . . .        | 2  | B | KCH/3LAN2 |
| Laboratory Practice in Biochemistry . . . . .                 | 2  | B | KCH/3LBCH |
| Laboratory Practice in Bioorganic Chemistry. . . . .          | 2  | B | KCH/3LBIO |
| Laboratory Practice in Inorganic Chemistry . . . . .          | 2  | B | KCH/3LANC |
| Laboratory Practice in Organic Chemistry 1 . . . . .          | 2  | B | KCH/3LOR1 |
| Organic Chemistry 1 . . . . .                                 | 4  | B | KCH/3ORG1 |
| Reaction Mechanisms in Organic Chemistry . . . . .            | 5  | B | KCH/5REME |
| Toxicology of Inorganic and Organic Compounds. . . . .        | 5  | B | KCH/3TAOS |
| Advanced Bioorganic Chemistry . . . . .                       | 6  | M | KCH/2PBIO |
| Diploma Thesis 2 in Chemistry. . . . .                        | 10 | M | KCH/2DIP2 |
| Diploma Thesis 4 in Chemistry. . . . .                        | 10 | M | KCH/2DIP4 |
| Ecotoxicological Bioassays. . . . .                           | 2  | M | KCH/2EKOT |
| Fundamentals of Biophysical Methods in Biochemistry. . . . .  | 2  | M | KCH/2ZBFM |
| Laboratory Practice in Advanced Bioorganic Chemistry. . . . . | 2  | M | KCH/2LBIO |

|   |   |   |           |
|---|---|---|-----------|
| Laboratory Practice in Spectral and Separation Methods. . . . . | 2 | M | KCH/2LSSM |
| Mass Spectroscopy . . . . .                                     | 6 | M | KCH/2HMSM |
| Stereochemistry . . . . .                                       | 4 | M | KCH/2STER |
| Toxicology of Natural and Bioactive Compounds . . . . .         | 5 | M | KCH/2TPBS |

## MATHEMATICS

|  |   |   |           |
|--|---|---|-----------|
| Algebra 2. . . . .                                 | 5 | B | KMA/BALG2 |
| Algebra 3. . . . .                                 | 4 | B | KMA/BALG3 |
| Discrete Mathematics. . . . .                      | 2 | B | KMA/BZAKO |
| Chapters on Probability and Statistics . . . . .   | 2 | B | KMA/BKKPS |
| Geometry 2 . . . . .                               | 4 | B | KMA/BGEO2 |
| Geometry 4 . . . . .                               | 3 | B | KMA/BGEO4 |
| Introduction to Didactics of Mathematics . . . . . | 4 | B | KMA/BUDIM |
| Mathematical Analysis 2 . . . . .                  | 4 | B | KMA/BANL2 |
| Introduction to Global Analysis . . . . .          | 2 | M | KMA/NGLAN |
| Introduction to Representation Theory . . . . .    | 2 | M | KMA/NTERE |
| Didactics of Mathematics 2 . . . . .               | 2 | M | KMA/NDMA2 |
| Didactic Software . . . . .                        | 2 | M | KMA/NDISW |
| Introduction to Algebraic Geometry . . . . .       | 2 | M | KMA/NUAGE |
| Methods of Solving Mathematical Tasks 2 . . . . .  | 2 | M | KMA/NMER2 |
| Set Theory . . . . .                               | 2 | M | KMA/NTMNO |

## PHYSICS

|   |   |   |           |
|---|---|---|-----------|
| Biophysics . . . . .                              | 3 | B | KFY/3FBIO |
| Physical Biomonitoring, Rad. Protection . . . . . | 3 | B | KFY/3FBRO |
| Biomedical Imaging Systems 2 . . . . .            | 2 | B | KFY/3FBZ2 |
| Modeling and Simulation. . . . .                  | 4 | B | KFY/3FMOS |
| Electronics Laboratory Practice. . . . .          | 3 | B | KFY/3FPE  |
| Physical Laboratory Practice 1. . . . .           | 3 | B | KFY/3FPR1 |
| Physical Laboratory Practice 3 . . . . .          | 4 | B | KFY/3FPR3 |
| Theoretical Mechanics 2 . . . . .                 | 3 | B | KFY/3FTM2 |
| Physics – Oscillations and Waves. . . . .         | 4 | B | KFY/3FZFK |
| Physics – Thermal . . . . .                       | 4 | B | KFY/3FZFT |
| Physics – Electricity 1 . . . . .                 | 3 | B | KFY/3FZF1 |
| Quantum Physics. . . . .                          | 5 | M | KFY/NKF   |
| Theory of Electromagnetic Field . . . . .         | 4 | M | KFY/NTEP  |

### Note for courses of Faculty of Science:

B = courses only for Bachelor degree;

M = courses only for Master degree.



## ESN Hradec Králové

The biggest non-profit voluntary student association in Europe. The network is constantly developing and expanding and ESN Hradec Králové (ESN HK) is a part of it! After choosing our university for your exchange, chances are you will hear about us. But who are we? And what do we do?

Well, we're all students just like you. And we do a variety of things, including (online) event organization, advocacy towards institutions, HR development, and helping international students' mobilities be more meaningful and unforgettable. At the UHK, ESN HK also organizes pickups from the airport at the beginning of each semester.

**If you are interested in participating in our events, getting in touch with local students, or you are in need of a pickup at the beginning of the semester, don't forget to register at: <https://artemis.esnhk.cz/>**

**Text us if you have any questions: we're on [Instagram \(@esn\\_hk\)](#).**



ARTEMIS REGISTRATION



ESN HK INSTAGRAM



University of Hradec Králové

Rokitanského 62  
500 03 Hradec Králové 3  
Czech Republic

Erasmus ID code: **CZ HRADEC01**



[study@uhk.cz](mailto:study@uhk.cz)



[UniversityofHradecKralove](https://www.facebook.com/UniversityofHradecKralove)



[www.uhk.cz/en](http://www.uhk.cz/en)



[uhk\\_en](https://www.instagram.com/uhk_en)



[University of Hradec Králové](https://www.youtube.com/UniversityofHradecKralove)